

The asbestos register in this 'Division 5' report is not a complete list of asbestos items on the school site.

This report only includes asbestos items identified from a visual assessment and sampled in a laboratory. There are limited access and no access areas that could not be assessed or have samples taken.

Before undertaking any building works, a 'Division 6' intrusive assessment must be carried out to determine the presence of asbestos in the construction zone.

ASBESTOS MATERIALS ASSESSMENT

Sunshine College Campus 4

Northumberland Road

Sunshine North, VIC 3020

19 February 2020



19 February 2020

Project No.: 754-MELEN230899

Victorian School Building Authority
33 St Andrews Place
East Melbourne VIC 3002

Attention: **Manager – Asbestos Reform**

Subject: **Asbestos Materials Assessment of Sunshine College Campus 4, Northumberland Road, Sunshine North, VIC 3020 (Site 8790)**

Dear Sir/Madam,

Coffey Environments Australia Pty Ltd (Coffey) is pleased to present its report following an asbestos materials assessment of Sunshine College Campus 4, Northumberland Road, Sunshine North, VIC 3020 (Site 8790).

Please note that all activities and services provided by Coffey are subject to the Methodologies and Statement of Limitations contained within this report.

Please do not hesitate to contact the undersigned should you wish to discuss any aspect of the report.

For and on behalf of
Coffey Environments Australia Pty Ltd



John Byrne,
Team Leader, WHS

RECORD OF DISTRIBUTION

No. of copies	Report File Name	Report Status	Date	Prepared for:	Initials
1	754-MELEN230899_R01_Sunshine College Campus 4	FINAL	19 February 2020	VSBA	JB

CONTENTS

Accredited for compliance with
ISO/IEC 17020. NATA accredited
inspection body 2220



EXECUTIVE SUMMARY	6
1. INTRODUCTION	10
1.1 Scope of Work	10
1.2 Assessment Team	10
1.3 Information Sources	10
2. METHODOLOGY	11
3. LIMITATIONS	13
4. RESULTS	15
4.1 Site Description	15
4.2 Signage and Labelling	15
4.3 Access Restrictions	15
4.4 Asbestos Materials Register	16
5. RISK ASSESSMENT	18
5.1 Asbestos Containing Materials	18
5.2 Risk Score	19
5.3 Action Ratings	19
6. GLOSSARY	21
7. RECOMMENDATIONS	22
8. BIBLIOGRAPHY	23

LIST OF ATTACHMENTS

Accredited for compliance with
ISO/IEC 17020. NATA accredited
inspection body 2220



Photographs

Appendices

Appendix A **Asbestos Materials Register**

Appendix B **Analytical Report**

Appendix C **Asbestos Materials Maintenance Log**

Appendix D **Legislative Requirements**

Appendix E **Site Plan**

Appendix F **Incident Report**

EXECUTIVE SUMMARY

Coffey Environments Australia Pty Ltd (Coffey) conducted an asbestos materials assessment (the assessment) of Sunshine College Campus 4, Northumberland Road, Sunshine North, VIC 3020 (Site 8790-3) (the site).

The assessment involved the investigation and identification of Asbestos-containing Materials (ACM), in accordance with the Scope of Works described in this report.

From the assessment and laboratory analysis results, a register of asbestos materials has been produced, in accordance with the requirements of the relevant Regulations, Compliance Codes, Codes of Practice and Guidance Notes.

State legislation and industry guidance requires that the register be used by the school, and other interested parties, such as contractors, as part of an overall asbestos management plan designed to control the risks of exposure to hazardous materials. This report summarises the findings of the risk assessments, as well as presenting methods of risk reduction that may be utilised as part of the management plan.

During the assessment conducted by Coffey, asbestos materials were identified or suspected. Recommended actions and risk control strategies for these materials are contained within the asbestos materials register and the recommendations section of this report.

Action Rating A1

At the time of the assessment, no ACM with an Action Rating of A1 were identified or presumed.

Action Rating A2

At the time of the assessment, ACM with an Action Rating of A2 were identified or presumed as follows:

Science Wing	
27 Science	Mineral kits

Access should be restricted to ACM with an action rating of A2. These ACM should be programmed for removal in the short term utilising appropriate control measures.

Action Rating A3

At the time of the assessment the ACM with an Action Rating of A3 were identified or presumed as follows:

Multi-Purpose Hall	
64 Prop Store	Cement sheet wall(s)
64 Prop Store	Cement sheet partition wall(s) (Removed)
65 Male Change	Cement sheet wall(s)
65 Male Change	Cement sheet cubicle partition(s)
66 Female Change	Cement sheet cubicle partition(s)
66 Female Change	Cement sheet wall(s)
68 Steps	Cement sheet ceiling(s)

Multi-Purpose Hall	
69 Steps	Cement sheet ceiling(s)
70 CLNR	Cement sheet wall(s)
71 CLNR	Cement sheet wall(s)
79 PE Store	Cement sheet wall(s)
79 PE Store	Cement sheet ceiling(s)
80 PE Store	Cement sheet wall(s)
81 Hall	Cement sheet fire hose cupboard lining
83 Male Staff	Cement sheet ceiling(s)
83 Male Staff	Cement sheet wall(s)
84 Female Staff	Cement sheet wall(s)
85 Male	Cement sheet cubicle partition(s)
85 Male	Cement sheet ceiling(s)
85 Male	Cement sheet wall(s)
86 Female	Cement sheet cubicle partition(s)
86 Female	Cement sheet wall(s)
88 Lobby	Cement sheet wall(s)
90 Lobby	Cement sheet wall(s)
91 Cloak	Cement sheet wall(s)
93 Servery	Cement sheet wall(s)
94 Bulk Store	Cement sheet wall(s)
95 Porch	Cement sheet infill panel(s)
273 Control Platform	Cement sheet upper wall(s)
244 Store	Cement sheet wall(s)
Science Wing	
25 Cleaner	Cement sheet wall(s)
Trade Wing	
External	Cement sheet eaves

It is recommended that these materials are enclosed; encapsulated or sealed, and that they are managed and re-inspected in accordance with the asbestos management plan. ACM with an action rating of A3 should be programmed for removal in the medium term.

Action Rating A4

At the time of the assessment the ACM with an Action Rating of A4 were identified or presumed as follows:

Commerce Wing	
55 F S WC	Cement sheet infill panel(s)
External	Mastic to block work
External	Cement sheet eaves

Multi-Purpose Hall	
65 Male Change	Cement sheet ceiling(s)
66 Female Change	Cement sheet ceiling(s)
67 Platform	Cement sheet upper wall(s)
67 Platform	Millboard within electrical boxes
70 CLNR	Cement sheet ceiling(s)
71 CLNR	Cement sheet ceiling(s)
74 Porch	Cement sheet infill panel(s)
75 Porch	Cement sheet infill panel(s)
76 Chair Store	Cement sheet ceiling(s)
77 Chair Store	Cement sheet ceiling(s)
80 PE Store	Cement sheet ceiling(s)
81 Hall	Cement sheet ceiling(s)
82 Porch	Cement sheet infill panel(s)
84 Female Staff	Cement sheet ceiling(s)
86 Female	Cement sheet ceiling(s)
87 Porch	Cement sheet infill panel(s)
88 Lobby	Cement sheet ceiling(s)
89 Porch	Cement sheet infill panel(s)
90 Lobby	Cement sheet ceiling(s)
91 Cloak	Cement sheet ceiling(s)
93 Servery	Cement sheet ceiling(s)
94 Bulk Store	Cement sheet ceiling(s)
95 Porch	Cement sheet ceiling(s)
130 Covered Way	Cement sheet infill panel(s)
244 Store	Cement sheet ceiling(s)
External	Cement sheet infill panel(s)
Music Block	
98 Instrument Room	Vinyl floor tiles
99 Instrument Store	Vinyl floor tiles
100 Vocal Room	Vinyl floor tiles
102 Corridor	Vinyl tiles
102 Corridor	Adhesive under vinyl floor sheet/tiles
External	Mastic to window(s)

Science Wing	
30 Store	Internal insulation to incubator(s)
35 Store	Mastic to duct work joints(s)
External	Cement sheet porch ceiling(s)
External	Cement sheet eaves
Trade Wing	
3 Clay Store	Internal insulation to kiln(s)
8 Corridor	Cement sheet ceiling(s)
External	Mastic to window(s)

ACM with an action rating of A4 should be managed and reinspected in accordance with the asbestos management plan. These ACM should be programmed for removal during maintenance or refurbishment works.

Action Rating A5

At the time of the assessment, ACM with an Action Rating of A5 were identified or presumed as follows:

Multi-Purpose Hall	
93 Servery	Electrical backing board(s)
244 Store	Electrical backing board(s)
External	Mastic to block work
Music Block	
98 Instrument Room	Adhesive under vinyl floor sheet/tiles
99 Instrument Store	Adhesive under vinyl floor sheet/tiles
100 Vocal Room	Adhesive under vinyl floor sheet/tiles
103 Office	Vinyl tiles
103 Office	Adhesive under vinyl floor sheet/tiles
Science Wing	
27 Science	Mastic to block work

ACM with an action rating of A5 should be managed and reinspected periodically in accordance with the asbestos management plan.

In addition to the above, areas of No Access or Limited Access were present, as described in Section 4.3. It should be presumed that ACM are present in these areas until further inspection can confirm or refute their presence.

1. INTRODUCTION

Coffey Environments Australia Pty Ltd (Coffey) was commissioned by the Victorian School Building Authority (VSBA) to conduct an asbestos materials assessment of Sunshine College Campus 4, Northumberland Road, Sunshine North, VIC 3020 (the site).

The assessment was conducted on 13 November 2019 to 14 November 2019.

Sunshine College Campus 4 has previously been subjected to an asbestos assessment (reference: AsbAudit_S8790_C04_May_2015). The findings of the previous assessment may be referenced in this report, where they are still applicable to the current assessment.

1.1 Scope of Work

The scope of work involved Coffey Occupational Health & Safety Consultants (the assessors) mobilising to the site and conducting a non-destructive asbestos materials assessment and a visual assessment walkover of the site in accordance with Division 5, Part 4.4 of the *Victorian Occupational Health and Safety Regulations 2017*. The assessment included sampling suspected materials for laboratory analysis, where appropriate.

This assessment was conducted in accordance with Coffey in-house methods WIFS1 and WIFS2.

1.2 Assessment Team

The assessment was undertaken by James Bracken of Coffey.

1.3 Information Sources

The following source(s) provided information about the site and its history:

- Andrew Pitrakou, Principal.

2. METHODOLOGY

Asbestos material assessments are undertaken considering a risk management approach, in accordance with best practice, relevant statutory regulations and relevant Codes of Practice.

Onsite investigations cannot guarantee to locate the presence of ACM in restricted locations such as inline heaters in air conditioning systems. Whilst every effort will be made by the assessor to locate and sample restricted areas, further access and detailed investigation may be required with the assistance of contractors and/or electricians.

Asbestos material assessments are restricted to areas that are reasonably accessible during the assessment, with respect to the following:

- Without contravention of relevant statutory requirements or codes of practice;
- Without placing the assessor at undue risk;
- Without dismantlement or damage to installed fixtures and fittings, plant, electrical equipment, machinery; and
- Without other than non-superficial damage to installed fixtures, fittings and structure.

An on-site visual inspection (inspection) was undertaken to assess, so far as is reasonably practicable, the presence, location and condition of any suspected ACM debris to ground surfaces within the site. The inspections will be limited to those areas that are reasonably accessible.

Where the assessor encountered access restrictions during the assessment, these situations are documented in this report.

No assessment can be regarded as absolute. Future refurbishments/demolition of the building may reveal materials concealed during the assessment, which were not accessible at the time of the assessment.

The assessment involved an onsite investigation for the presence of Asbestos-containing Materials (ACM). Information pertaining to the site was collected from the sources listed in Section 1.3. Based on the available data and the status of the site at the time of inspection, where suspect items or situations were identified, visual and/or analytical characterisation (as appropriate) was performed and reported in the Asbestos Materials Register presented in Appendix A.

Only 'typical' suspected material occurrences were inspected and sampled. Sampling was undertaken on a representative basis. Representative sampling is defined as one like sample per consistent material type, situation or item. For example, the inspection of one fire door of the same type within the same area is undertaken (i.e. not every 'matching' fire door is examined). Sample collection was performed in a non-destructive and non-invasive manner. Presumptions, based on the knowledge and experience of the assessor, that inaccessible areas contain ACM have also been made and are stated within the Register.

The scope of this assessment did not allow intrusive sampling to be undertaken in all locations, and consequently the Register may have limitations as a reference document for the purposes of renovation or demolition.

Photographs were taken of suspect ACM. These are provided in a separate section in this report.

Samples collected were individually identified, transported, analysed and reported in accordance with relevant Statutory Regulations, Codes of Practice and Coffey Work Instructions. The Coffey laboratory undertaking analysis is appropriately NATA certified for the analysis conducted.

The presence of asbestos in bulk samples was determined by Polarised Light Microscopy (PLM) with dispersion staining techniques.

A risk assessment was conducted on the basis of the condition, type and location of the materials at the time of inspection. The risk assessment is documented in the Asbestos Materials Register.

Asbestos-containing materials identified in this report have been assessed on the basis that the materials remain as observed at the time of the assessment.

3. LIMITATIONS

This report and the associated services performed by Coffey are in accordance with the scope of services set out in the contract between Coffey and the Client. The scope of services was defined by the requests of the Client, by the time and budgetary constraints imposed by the Client, and by the availability of access to the site.

Coffey derived the data in this report primarily from visual inspections, examination of available records, interviews with individuals with information about the site, and if requested, limited sample collection and analysis made on the dates indicated. In preparing this report, Coffey has relied upon, and presumed accurate, certain information provided by government authorities, the Client and others identified herein. The report has been prepared on the basis that while Coffey believes all the information in it is deemed reliable and accurate at the time of preparing the report, it does not warrant its accuracy or completeness and to the full extent allowed by law excludes liability in contract, tort or otherwise, for any loss or damage sustained by the Client arising from or in connection with the supply or use of the whole or any part of the information in the report through any cause whatsoever.

Limitations also apply to analytical methods used in the identification of substances (or parameters). These limitations may be due to non-homogenous material being sampled (i.e. the sample that was analysed may not be representative), low concentrations, the presence of 'masking' agents and the restrictions of the approved analytical technique. As such, non-statistically significant sampling results can only be interpreted as 'indicative' and not used for quantitative assessments.

The data, findings, observations, conclusions and recommendations in the report are based solely upon the state of the site at the time of the investigation. The passage of time, manifestation of latent conditions or impacts of future events (e.g. changes in legislation, scientific knowledge, land uses, etc.) may render the report inaccurate. In those circumstances, Coffey shall not be liable for any loss or damage that may be occasioned directly or indirectly through the use of, or reliance upon, the contents of the report.

This report has been prepared on behalf of and for the exclusive use of the Client, and is subject to and issued in connection with the provisions of the agreement between Coffey and the Client. Coffey accepts no liability or responsibility whatsoever and expressly disclaims any responsibility for or in respect of any use of or reliance upon this report by any third party or parties.

It is the responsibility of the Client to accept if the Client so chooses any recommendations contained within this report and implement them in an appropriate, suitable and timely manner.

3.1 Asbestos Assessment

Asbestos assessments are non-destructive and as such are not intended for use or referral for the purpose of refurbishment or demolition of buildings. In the event of refurbishment or demolition or structural alterations further investigation, which may entail destructive testing, shall be required.

No inspection can be guaranteed to locate all asbestos within a building. The assessment cannot be regarded as absolute, without extensive invasion of the building. Refurbishment or demolition of the building may expose situations, which were concealed or otherwise impractical to access during this assessment.

Coffey assessors may take samples at situations known, or suspected, to contain Asbestos. Where the analysis determines that No Asbestos is Detected (NAD) the samples are listed in the report to provide information for future assessments.

Representative sampling is defined as one like sample per consistent material type, situation or item. In these instances only one test sample will be collected for analytical confirmation and the results expressed as consistent and typical of the site.

Due to the very low concentration of asbestos fibres and the non-homogenous matrix of vinyl floor tiles, false negative results may be obtained. Therefore the accuracy of all results cannot be guaranteed.

Notably, with some asbestos containing bulk material it can be very difficult, or impossible to detect the presence of asbestos using the polarised light microscopy analytical method, even after ashing or disintegration of samples. This is due to the low grade or small length or diameter of asbestos fibres present in the material, or attributed to the fact that very fine fibres have been distributed individually throughout the materials.

The analysis of many asbestos products used as a component of insulation materials, may be compromised in instances where the material has been heat affected, as heat may alter the morphology of the fibrous material.

The Client must not rely upon an inspection or report as indicating that a site is “asbestos free”. All that the report can be relied upon to show is that no asbestos was found (or that only such asbestos was found as was reported to be found) in the course of the inspection. The findings of the report must be considered together with the specific scope and limitations of the type of inspection undertaken.

The recommendations, conclusions or assessments of the stability of asbestos materials contained in this report shall not abrogate a person of their responsibility to work in accordance with Regulatory Requirements, Codes of Practice, Guidelines, Material Safety Data Sheets, Work Instructions or reasonable work practices.

In accordance with current Guidelines and relevant Regulatory Requirements, we recommend that identified asbestos materials are managed in accordance with an appropriate asbestos materials management plan.

The recommended re-inspection period of ACM within the register is based upon the requirements of the relevant Code of Practice. However reference should also be made to individual state regulatory requirements.

Changes in condition of asbestos materials or work practices may dictate shorter re-inspection periods based on a revised risk assessment.

4. RESULTS

4.1 Site Description

At the time of the assessment, the site consisted of seven permanent buildings and three sheds.

The ATC Main Building was constructed in 2009 from concrete, metal, brick and timber.

The Commerce Wing was constructed in 1988 from concrete and brick.

The Multi Purpose Hall was constructed in 1988 from brick and timber.

The Music Block was constructed in 1988 from a brick.

The Science Wing was constructed in 1988 from concrete and brick.

The Stem Building was constructed in 2019 from metal and brick.

The Trade Wing was constructed in 1988 from concrete and brick.

The Bike Shed was constructed in 1997 from metal.

The Tractor Shed was constructed in 1997 from metal.

The Storage Shed was constructed in 2013 from metal.

4.2 Signage and Labelling

There was a sign at entrance directing visitors to reception.

Asbestos labelling (as per VSBA requirements) was placed on all school buildings that were known to contain asbestos.

A site induction label was placed on the Commerce Block (as per VSBA requirements).

4.3 Access Restrictions

Where No Access or Limited Access areas have been identified it should be presumed that ACM are present in these areas until further investigation can confirm or refute the presence.

No inspection can be guaranteed to locate all asbestos in a specific location. The assessment cannot be regarded as absolute, without extensive invasion of structures. Future demolition and or renovation to site structures may expose situations, which were concealed or otherwise impractical to access during this assessment.

4.3.1 No Access Areas

The following areas were not accessed during the assessment:

- 96 Boiler, Music Block;
- 244 Store (Basement), Multi-Purpose Hall;
- 68 Steps, Multi-Purpose Hall;
- 69 Steps, Multi-Purpose Hall;

- 93 Severy, Multi- Purpose Hall;
- Heights above 3m throughout site, including high ceilings, external eaves and fascias;
- Sub floor and ceiling voids throughout the site;
- Live electrics, including switchboards;
- Within plant (e.g. heaters, boilers);
- Building roofs throughout site; and
- Behind walls, window frames, ceramic tiles, urinals etc.

4.3.2 Limited Access Areas

The following areas had limited access during the assessment:

- Beneath floor coverings throughout the site (e.g. carpet); and
- Areas where access was limited due to stored items.

4.4 Asbestos Materials Register

The Asbestos Materials Register is made up of relevant information gathered on site plus Coffey's assessment of risk and assignment of action ratings. Reference to photographs, where available, is made in the register along with sample identification and analysis results, where applicable. Sample analysis results from previous assessments may be utilised and referenced in this register.

Appendix A contains the register of asbestos materials identified or suspected during the assessment.

The register is in tabular form and flows from left to right starting with the material description, through additional information, leading to an assessment of risk and recommended action for remedial works. Recommended actions are a guide only. The client should decide the most appropriate controls based on such factors as risk, detailed knowledge of workplaces and procedures, plans for upgrade or refurbishment etc.

Please refer to the following sections in conjunction with the Register.

Section 2	Methodology	Contains important information regarding the assessment and report methods
Section 3	Limitations	Limitations regarding scope, methodology
Section 5	Risk Assessment	Describes the risk assessment methodology
Section 6	Glossary	Explains all terminology and ratings used
Section 7	Recommendations	Contains information and recommendations applicable to asbestos materials and their management
Photographs		Cross - referenced from register, where available
Appendix A	Asbestos Materials Register	Register containing a list of all asbestos materials identified during the assessment
Appendix B	Analytical Reports	Contains results of sample analysis from the assessment. See previous reports for referred samples

Appendix C	Asbestos Materials Maintenance Log	Table provided for client use, if required, to maintain a record of works associated with asbestos materials
Appendix D	Legislative Requirements	Tabulates legislative requirements for Victoria (accurate to the last periodic update by Coffey)
Appendix E	Site Plans	Cross referenced from register, where available
Appendix F	Incident Report	Contains information regarding suspected asbestos issues identified during the assessment

5. RISK ASSESSMENT

5.1 Asbestos Containing Materials

Coffey adopts the following risk assessment algorithm in order to assess the risks associated with individual asbestos containing materials identified;

1. Asbestos Fibre Type

Variable	Score	Example of score variables
Asbestos Fibre Type	0	No asbestos
	1	Chrysotile
	2	Amphibole asbestos (excluding Crocidolite)
	3	Crocidolite

2. Surface Treatment

Variable	Score	Example of score variables
Surface Treatment	0	Composite materials, vinyl floor tiles, reinforced plastics, mastics & resins
	1	Enclosed laggings, sprays, low density board with exposed face sealed and cement sheets
	2	Unsealed low density board or encapsulated lagging/spray or cement debris
	3	Unsealed thermal insulation, lagging/spray

3. Product Type

Variable	Score	Example of score variables
Product Type	0	No asbestos detected
	1	Non-Friable: Composite materials, vinyl floor tiles, reinforced plastics, mastics & resins, cement products, semi ridged paints / decorative finishes
	2	Friable: Low density board, millboard, asbestos textiles, gaskets, ropes, woven textiles, paper and felts
	3	Friable: Thermal insulation, lagging, sprayed asbestos, asbestos mattresses and packing, loose asbestos

4. Extent of Damage (Condition)

Variable	Score	Example of score variables
Condition	0	No visible damage
	1	Few scratches / marks broken edges etc.
	2	Significant breakage / many areas of damage revealing loose asbestos fibres
	3	High damage / visible debris

5. Likelihood of Disturbance

Variable	Score	Example of score variables
Likelihood of Disturbance	0	Usually inaccessible or unlikely to be disturbed
	1	Occasionally likely to be disturbed
	2	Easily disturbed
	3	Routinely disturbed

Total risk assessment score = Sum 1+2+3+4+5

Should no asbestos be detected then the Register will indicate a material risk of 0.

5.2 Risk Score

Variable	Score	Example of score variables
Risk Score	1 - 2	Very Low Risk – Action A5
	3 - 4	Very Low Risk - Action A4
	5 - 7	Low Risk – Action A3
	8 - 11	Medium Risk – Action A2
	12 - 15	High Risk – Action A1

5.3 Action Ratings

A1	Action 1	Restrict Access, Manage and Remove Immediately Under Fully Controlled Conditions
		<p>As a guide, the material conforms to one, or more, of the following:</p> <ul style="list-style-type: none"> Friable or poorly bonded to substrate, located in accessible areas Severely damaged/water damaged, or unstable Further damage or deterioration likely Friable asbestos material located in air conditioning ducting Asbestos debris in reasonably accessible areas
A2	Action 2	Restrict Access, Manage and Remove in the Short Term Utilising Appropriate Control Measures
		<p>As a guide, the material conforms to one, or more, of the following:</p> <ul style="list-style-type: none"> Damaged material In a reasonably accessible area Possibility of disturbance through contact Stored asbestos material in reasonably accessible areas Asbestos debris in rarely accessed areas Poorly bonded to substrate with bonding un-achievable

A3	Action 3	Enclose, Encapsulate or Seal; Manage & Re-inspect Periodically, in Accordance With the Asbestos Management Plan; Plan for Removal in the Medium Term
		<p>As a guide, the material conforms to one, or more, of the following:</p> <ul style="list-style-type: none"> • Readily visible for further assessment • Friable material or poorly bonded to substrate with bonding achievable • Possibility of fibre release through non aggressive disturbance or contact • Possibility of deterioration caused by weathering • Bonded asbestos products located in accessible areas
A4	Action 4	Program for Planned Removal During Maintenance or Refurbishment; Manage & Re-inspect Periodically In Accordance With the Asbestos Management Plan
		<p>As a guide, the material conforms to one, or more, of the following:</p> <ul style="list-style-type: none"> • Further disturbance or damage unlikely other than during maintenance or service • Readily visible for further assessment • Stored material in rarely accessed areas • Asbestos friction materials, gaskets and brake linings
A5	Action 5	Manage & Re-inspect Periodically In Accordance With the Asbestos Management Plan
		<p>As a guide, the material conforms to one, or more, of the following:</p> <ul style="list-style-type: none"> • Firmly bonded to substrate and readily visible for inspection • Inaccessible and / or fully contained • Stable and damage unlikely

6. GLOSSARY

The following terminology is used within the register to describe the materials identified

Material Descriptors

CH	Chrysotile (white) Asbestos
CR	Crocidolite (blue) Asbestos
AM	Amosite (brown) Asbestos
NAD	No Asbestos Detected
ACM	Asbestos Containing Material or product
FRIABLE	Friable asbestos is in the form of a powder, or can be crumbled, pulverized or reduced to powder by hand pressure when dry. Friable asbestos includes materials such as sprayed and thermal insulation, pipe insulation and millboard, and can release fibres with only minimal disturbance.
NON-FRIABLE	Non-Friable asbestos products are ones in which the asbestos fibres are bound within the matrix of the material. Non-friable asbestos is difficult to damage or cause the release of fibres by hand and includes materials such as asbestos cement sheeting (fibre cement or fibro), vinyl floor tiles and zelemite electrical switchboards. However, non-friable asbestos containing materials that have been subjected to weathering, physical damage, water damage, fire or other conditions may contain exposed fibres which could be released upon disturbance.

Acronyms

NOHSC	National Occupational Health and Safety Commission
NATA	National Association of Testing Authorities, Australia
A/C	Air Conditioning
F/C	Fibre Cement
PLM	Polarised Light Microscopy
SEM	Scanning Electron Microscopy
EDAX	Energy Dispersive X-ray Analysis

Units of Measurement

m	metre	m ²	square metres	lm	Linear metres
---	-------	----------------	---------------	----	---------------

7. RECOMMENDATIONS

Friable ACM exhibits the greatest risk to human health as fibres are released upon minimal disturbance. As such removal and replacement would be the preferred option if such materials were found in accessible areas or air conditioning systems.

Alternatively, removal and replacement may not be the preferred option for non-friable ACM in a good and stable condition as the risk associated with removal could be high (as in the case of only partial demolition of structures on site).

The selection of the most appropriate control measure should be determined from risk assessments and detailed knowledge of the workplace and activities. The following general principles may be applied:

- If the ACM is friable, in a poor/unstable condition and accessible with risk to health from exposure, immediate access restrictions should be applied and removal is required as soon as practicable using a licensed removalist.
- If the ACM is friable and accessible but in a stable condition, removal is preferred. However, if removal is not immediately practicable, then short-term control measures (i.e. restrict access, sealing, enclosure etc.) may be employed until removal can be facilitated.
- If the ACM is non-friable and in a poor/unstable condition; minimising disturbance and removal or encapsulation may be appropriate controls.

For non-friable ACMs in a good and stable condition, on-going maintenance and periodic inspection would be appropriate controls.

Any remaining identified ACMs or presumptions should be appropriately labelled, where possible, and regularly inspected to ensure they are not deteriorating and/or resulting in a potential risk to health.

Prior to any demolition, partial demolition, renovation or refurbishment, asbestos containing materials likely to be disturbed by those works should be removed in accordance with the Compliance Code - Removing Asbestos in Workplaces (2019).

Further assessment of risk through airborne fibre monitoring can assist with decisions on the most appropriate, and urgency of, control measures.

Other control measures such as training and communication strategies, control of contractors and administrative procedures must be considered as part of the overall Asbestos Management Plan.

8. BIBLIOGRAPHY

National Occupational Health and Safety Commission (NOHSC), *Approved Criteria for Classifying Hazardous Substances*, 1008 - 2002

National Occupational Health and Safety Commission Code of Practice for the Management and Control of Asbestos in the Workplace; [NOHSC: 2018 (2005)]

National Occupational Health and Safety Commission Code of Safe Removal of Asbestos [NOHSC:2002(2005)]

National Occupational Health and Safety Commission (NOHSC), *List of Designated Hazardous Substances*, 10005 - 1999

National Occupational Health and Safety Commission (NOHSC), *Approved Criteria for Classifying Hazardous Substances*, 1008 - 2002

Occupational Health and Safety Act 2004 and Regulations 2017 (VIC)

Worksafe Victoria Compliance Code, Managing asbestos in workplaces, December 2019

Worksafe Victoria Compliance Code, Removing asbestos in workplaces, December 2019

Safe Work Australia - Workplace Exposure Standards for Airborne Contaminants (2011)

Photographs

Photograph 1

Cement sheet infill panel(s)

55 F S WC

Commerce Wing

Sample No. FI0300

Asbestos detected



Photograph 2

Cement sheet eaves

External

Commerce Wing

Sample No. Refer 33538/270-276, 324-326 &
333-335

Asbestos detected



Photograph 3

Mastic to block work

External

Commerce Wing

Sample No. FI0305

Asbestos detected



Photograph 4

Cement sheet wall(s)

64 Prop Store

Multi-Purpose Hall

Sample No. Refer 33538/147

Asbestos detected



Photograph 5

Cement sheet partition wall(s)

64 Prop Store

Multi-Purpose Hall

Sample No. Refer 33538/149

Asbestos detected



Photograph 6

Cement sheet ceiling(s)

65 Male Change

Multi-Purpose Hall

Sample No. Refer 33538/138

Asbestos detected



Photograph 7

Cement sheet wall(s)

65 Male Change

Multi-Purpose Hall

Sample No. Refer 33538/135,138 & 144

Asbestos detected



Photograph 8

Cement sheet cubicle partition(s)

65 Male Change

Multi-Purpose Hall

Sample No. Refer 33538/137

Asbestos detected



Photograph 9

Cement sheet cubicle partition(s)

66 Female Change

Multi-Purpose Hall

Sample No. Refer 33538/163

Asbestos detected



Photograph 10

Cement sheet ceiling(s)

66 Female Change

Multi-Purpose Hall

Sample No. Refer 33538/135,138 & 144

Asbestos detected



Photograph 11

Cement sheet wall(s)

66 Female Change

Multi-Purpose Hall

Sample No. Refer 33538/162, 165 & 166

Asbestos detected



Photograph 12

Millboard within electrical boxes

67 Platform

Multi-Purpose Hall

Sample No. Visual Observation

Asbestos presumed



Photograph 13

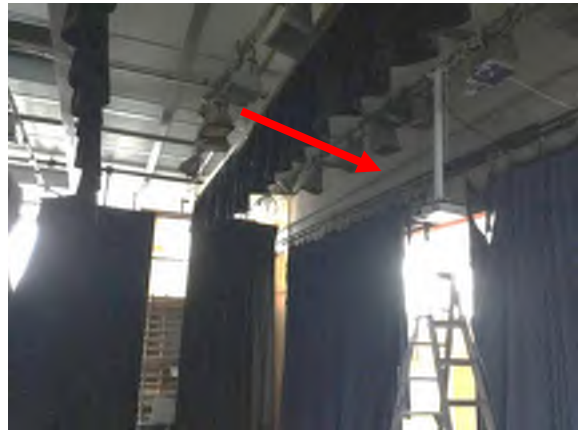
Cement sheet upper wall(s)

67 Platform

Multi-Purpose Hall

Sample No. FI0297

Asbestos detected



Photograph 14

Cement sheet wall(s)

70 CLNR

Multi-Purpose Hall

Sample No. Refer 33538/133

Asbestos detected



Photograph 15

Cement sheet ceiling(s)

70 CLNR

Multi-Purpose Hall

Sample No. Refer 33538/134

Asbestos detected



Photograph 16

Cement sheet wall(s)

71 CLNR

Multi-Purpose Hall

Sample No. Refer 33538/160

Asbestos detected



Photograph 17

Cement sheet ceiling(s)

71 CLNR

Multi-Purpose Hall

Sample No. Refer 33538/161

Asbestos detected



Photograph 18

Cement sheet infill panel(s)

74 Porch

Multi-Purpose Hall

Sample No. Refer 33538/175

Asbestos detected



Photograph 19

Cement sheet infill panel(s)

75 Porch

Multi-Purpose Hall

Sample No. Refer 33538/179

Asbestos detected



Photograph 20

Cement sheet ceiling(s)

76 Chair Store

Multi-Purpose Hall

Sample No. Refer 33538/169

Asbestos detected



Photograph 21

Cement sheet ceiling(s)

77 Chair Store

Multi-Purpose Hall

Sample No. Refer 33538/169

Asbestos detected



Photograph 22

Cement sheet ceiling(s)

79 PE Store

Multi-Purpose Hall

Sample No. Refer 33538/129 & 130

Asbestos detected



Photograph 23

Cement sheet wall(s)

79 PE Store

Multi-Purpose Hall

Sample No. Refer 33538/128

Asbestos detected



Photograph 24

Cement sheet wall(s)

80 PE Store

Multi-Purpose Hall

Sample No. Refer 33538/170

Asbestos detected



Photograph 25

Cement sheet ceiling(s)

80 PE Store

Multi-Purpose Hall

Sample No. Refer 33538/171 & 172

Asbestos detected



Photograph 26

Cement sheet ceiling(s)

81 Hall

Multi-Purpose Hall

Sample No. Refer 33538/101

Asbestos detected



Photograph 27

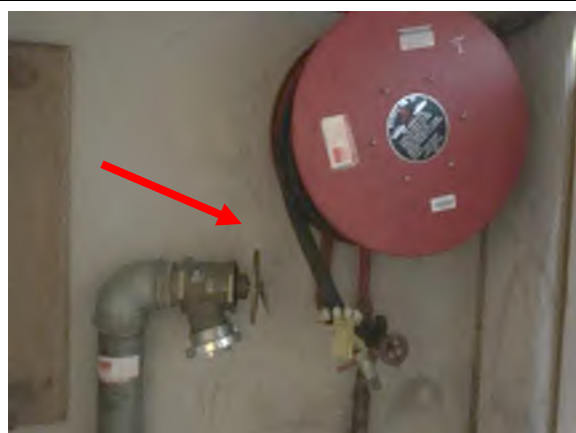
Cement sheet fire hose cupboard lining

81 Hall

Multi-Purpose Hall

Sample No. Refer 33538/132, 158 & 159

Asbestos detected



Photograph 28

Cement sheet infill panel(s)

82 Porch

Multi-Purpose Hall

Sample No. Refer 33538/178

Asbestos detected



Photograph 29

Cement sheet ceiling(s)

83 Male Staff

Multi-Purpose Hall

Sample No. Refer 33538/119 & 120

Asbestos detected



Photograph 30

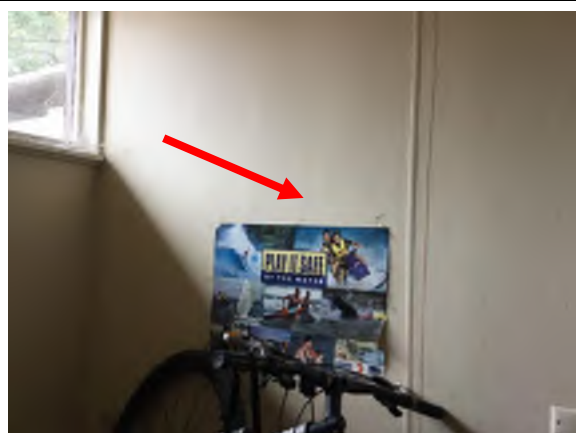
Cement sheet wall(s)

83 Male Staff

Multi-Purpose Hall

Sample No. Refer 33538/118

Asbestos detected



Photograph 31

Cement sheet ceiling(s)

84 Female Staff

Multi-Purpose Hall

Sample No. Refer 33538/103

Asbestos detected



Photograph 32

Cement sheet wall(s)

84 Female Staff

Multi-Purpose Hall

Sample No. Refer 33538/102

Asbestos detected



Photograph 33

Cement sheet cubicle partition(s)

85 Male

Multi-Purpose Hall

Sample No. Refer 33538/123

Asbestos detected



Photograph 34

Cement sheet ceiling(s)

85 Male

Multi-Purpose Hall

Sample No. Refer 33538/124

Asbestos detected



Photograph 35

Cement sheet wall(s)

85 Male

Multi-Purpose Hall

Sample No. Refer 33538/121 & 122

Asbestos detected



Photograph 36

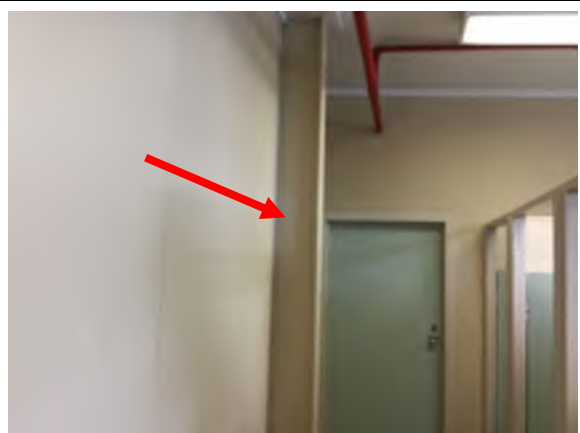
Cement sheet wall(s)

86 Female

Multi-Purpose Hall

Sample No. Refer 33538/104 & 105

Asbestos detected



Photograph 37

Cement sheet cubicle partition(s)

86 Female

Multi-Purpose Hall

Sample No. Refer 33538/106

Asbestos detected



Photograph 38

Cement sheet ceiling(s)

86 Female

Multi-Purpose Hall

Sample No. Refer 33538/107

Asbestos detected



Photograph 39

Cement sheet infill panel(s)

87 Porch

Multi-Purpose Hall

Sample No. Refer 33538/176

Asbestos detected



Photograph 40

Cement sheet ceiling(s)

88 Lobby

Multi-Purpose Hall

Sample No. Refer 33538/127

Asbestos detected



Photograph 41

Cement sheet wall(s)

88 Lobby

Multi-Purpose Hall

Sample No. Refer 33538/125

Asbestos detected



Photograph 42

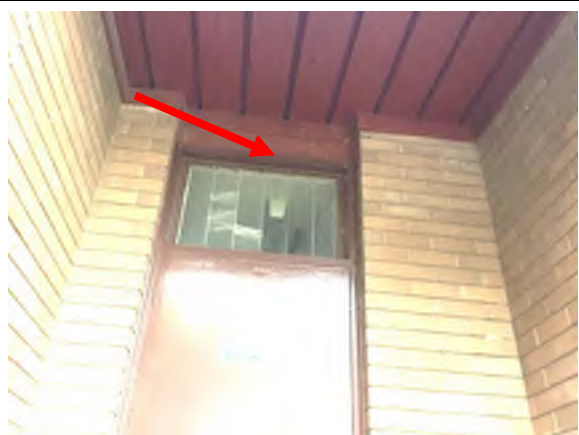
Cement sheet infill panel(s)

89 Porch

Multi-Purpose Hall

Sample No. Refer 33538/177

Asbestos detected



Photograph 43

Cement sheet wall(s)

90 Lobby

Multi-Purpose Hall

Sample No. Refer 33538/108

Asbestos detected



Photograph 44

Cement sheet ceiling(s)

90 Lobby

Multi-Purpose Hall

Sample No. Refer 33538/109

Asbestos detected



Photograph 45

Cement sheet wall(s)

91 Cloak

Multi-Purpose Hall

Sample No. Refer 33538/110

Asbestos detected



Photograph 46

Cement sheet ceiling(s)

91 Cloak

Multi-Purpose Hall

Sample No. Refer 33538/111

Asbestos detected



Photograph 47

Cement sheet ceiling(s)

93 Servery

Multi-Purpose Hall

Sample No. Refer 33538/117

Asbestos detected



Photograph 48

Electrical backing board(s)

93 Servery

Multi-Purpose Hall

Sample No. Visual Observation

Asbestos presumed



Photograph 49

Cement sheet wall(s)

93 Servery

Multi-Purpose Hall

Sample No. Refer 33538/116

Asbestos detected



Photograph 50

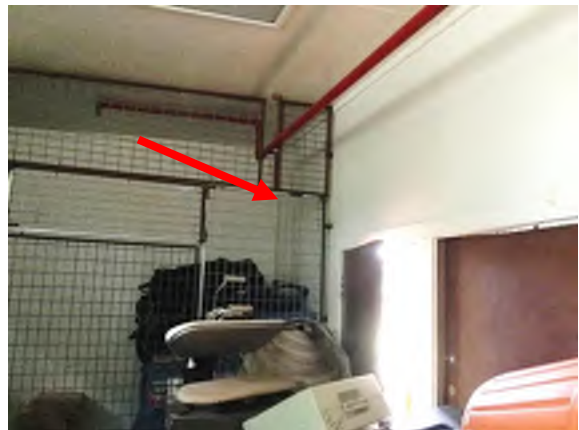
Cement sheet wall(s)

94 Bulk Store

Multi-Purpose Hall

Sample No. Refer 33538/112

Asbestos detected



Photograph 51

Cement sheet ceiling(s)

94 Bulk Store

Multi-Purpose Hall

Sample No. Refer 33538/113

Asbestos detected



Photograph 52

Cement sheet infill panel(s)

95 Porch

Multi-Purpose Hall

Sample No. Refer 33538/176

Asbestos detected



Photograph 53

Cement sheet ceiling(s)

95 Porch

Multi-Purpose Hall

Sample No. Refer 33538/114

Asbestos detected



Photograph 54

Cement sheet infill panel(s)

130 Covered Way

Multi-Purpose Hall

Sample No. Refer 33538/174

Asbestos detected



Photograph 55

Electrical backing board(s)

244 Store

Multi-Purpose Hall

Sample No. Visual Observation

Asbestos presumed



Photograph 56

Cement sheet wall(s)

244 Store

Multi-Purpose Hall

Sample No. Refer 33538/180,181,183

Asbestos detected



Photograph 57

Cement sheet ceiling(s)

244 Store

Multi-Purpose Hall

Sample No. Refer 33538/182

Asbestos detected



Photograph 58

Cement sheet upper wall(s)

273 Control Platform

Multi-Purpose Hall

Sample No. Refer FI0297

Asbestos detected



Photograph 59

Cement sheet infill panel(s)

External

Multi-Purpose Hall

Sample No. Visual Observation

Asbestos presumed



Photograph 60

Mastic to block work

External

Multi-Purpose Hall

Sample No. FI0298

Asbestos detected



Photograph 61

Adhesive under vinyl floor sheet/tiles

98 Instrument Room

Music Block

Sample No. Refer 33538/186y

Asbestos detected



Photograph 62

Vinyl floor tiles

98 Instrument Room

Music Block

Sample No. Refer FI0295

Asbestos detected



Photograph 63

Vinyl floor tiles

99 Instrument Store

Music Block

Sample No. Refer FI0295

Asbestos detected



Photograph 64

Adhesive under vinyl floor sheet/tiles

99 Instrument Store

Music Block

Sample No. Refer 33538/186y

Asbestos detected



Photograph 65

Vinyl floor tiles

100 Vocal Room

Music Block

Sample No. FI0295

Asbestos detected



Photograph 66

Adhesive under vinyl floor sheet/tiles

100 Vocal Room

Music Block

Sample No. Refer 33538/186y

Asbestos detected



Photograph 67

Adhesive under vinyl floor sheet/tiles

102 Corridor

Music Block

Sample No. Refer 33538/185y

Asbestos detected



Photograph 68

Vinyl tiles

102 Corridor

Music Block

Sample No. Refer 33538/185x

Asbestos detected



Photograph 69

Vinyl tiles

103 Office

Music Block

Sample No. Refer 33538/187x

Asbestos detected



Photograph 70

Adhesive under vinyl floor sheet/tiles

103 Office

Music Block

Sample No. Refer 33538/187y

Asbestos detected



Photograph 71

Mastic to window(s)

External

Music Block

Sample No. FI0296

Asbestos detected



Photograph 72

Cement sheet wall(s)

25 Cleaner

Science Wing

Sample No. Refer 33538/48

Asbestos detected



Photograph 73

Mastic to block work

27 Science

Science Wing

Sample No. FI0308

Asbestos detected



Photograph 74

Mineral kit(s)

27 Science

Science Wing

Sample No. Visual Observation

Asbestos presumed



Photograph 75

Internal insulation to incubator(s)

30 Store

Science Wing

Sample No. Visual Observation

Asbestos presumed



Photograph 76

Mastic to duct work joints(s)

35 Store

Science Wing

Sample No. Refer DA7316

Asbestos detected



Photograph 77

Cement sheet eaves

External

Science Wing

Sample No. Refer 33538/248, 299- 300, 303-307

Asbestos detected



Photograph 78

Cement sheet porch ceiling(s)

External

Science Wing

Sample No. Refer 33538/304 & 306

Asbestos detected



Photograph 79

Internal insulation to kiln(s)

3 Clay Store

Trade Wing

Sample No. Visual Observation

Asbestos presumed



Photograph 80

Cement sheet ceiling(s)

8 Corridor

Trade Wing

Sample No. Refer 33538/211

Asbestos detected



Photograph 81

Cement sheet eaves

External

Trade Wing

Sample No. Refer 33538/243, 245, 246, 279,
280 & 285

Asbestos detected



Photograph 82

Mastic to window(s)

External

Trade Wing

Sample No. FI0303

Asbestos detected



Appendix A

Asbestos Materials Register

Asbestos Materials Register

Assessor: James Bracken	Assessment Type: Standard Asbestos Sampling Assessment	Date of Assessment: 13 November 2019
Site Contact: Andrew Pitrakou, Principal	Site / Location: Sunshine College Campus 4	Review Date: 13 November 2024

Hazard Group	Description	Location	Photograph No.	Sample Number	Approx. Quantity	Asbestos Fibre Type	Surface Treatment	Product Type	Condition	Likelihood of Disturbance	Risk Score	Action Rating	Comments
ASBESTOS CONTAINING MATERIALS													
Commerce Wing													
ACM	Cement sheet infill panel(s)	55 F S WC	1	FI0300	1 m ²	1	1	1	1	0	4	A4	
ACM	Cement sheet eaves	External	2	Refer 33538/270-276, 324-326 & 333-335	190 m ²	2	1	1	0	0	4	A4	
ACM	Mastic to block work	External	3	FI0305	300 m ²	1	0	1	1	0	3	A4	
No access was gained within and behind walls, floors, subfloors, tiles, urinals, cavities, ceiling voids, plant/machinery, live electrics or to heights above 3m. Limited access below floor coverings, behind wall coverings and where large amounts of stored units were present. These areas may require further investigation.													
Multi-Purpose Hall													
ACM	Cement sheet wall(s)	64 Prop Store	4	Refer 33538/147	80 m ²	2	1	1	1	1	6	A3	
ACM	Cement sheet partition wall(s)	64 Prop Store	5	Refer 33538/149	110 m ²	2	4	4	4	2	7	A3	Removed.
ACM	Cement sheet ceiling(s)	65 Male Change	6	Refer 33538/138	80 m ²	1	1	1	1	0	4	A4	
ACM	Cement sheet wall(s)	65 Male Change	7	Refer 33538/135, 138 & 144	140 m ²	2	1	1	1	1	6	A3	Including partition walls and cister boxing.
ACM	Cement sheet cubicle partition(s)	65 Male Change	8	Refer 33538/137	16 m ²	1	1	1	1	1	5	A3	
ACM	Cement sheet cubicle partition(s)	66 Female Change	9	Refer 33538/163	16 m ²	1	1	1	1	1	5	A3	
ACM	Cement sheet ceiling(s)	66 Female Change	10	Refer 33538/135, 138 & 144	120 m ²	2	1	1	0	0	4	A4	
ACM	Cement sheet wall(s)	66 Female Change	11	Refer 33538/162, 165 & 166	140 m ²	2	1	1	1	1	6	A3	Including partition walls and cister boxing.
ACM	Millboard within electrical boxes	67 Platform	12	Visual Observation	3 unit	1	2	1	0	0	4	A4	Asbestos presumed
ACM	Cement sheet upper wall(s)	67 Platform	13	FI0297	60 m ²	1	1	1	1	0	4	A4	
ACM	Cement sheet ceiling(s)	68 Steps		Refer 33538/146	8 m ²	2	1	1	1	0	5	A3	No access into room. Identified in previous assessment, presumed still present.

Asbestos Materials Register

Hazard Group	Description	Location	Photograph No.	Sample Number	Approx. Quantity	Asbestos Fibre Type	Surface Treatment	Product Type	Condition	Likelihood of Disturbance	Risk Score	Action Rating	Comments
Multi-Purpose Hall													
ACM	Cement sheet ceiling(s)	69 Steps		Refer 33538/155	8 m ²	2	1	1	1	0	5	A3	No access into room. Identified in previous assessment, presumed still present.
ACM	Cement sheet wall(s)	70 CLNR	14	Refer 33538/133	8 m ²	2	1	1	1	1	6	A3	Including partition walls and cister boxing.
ACM	Cement sheet ceiling(s)	70 CLNR	15	Refer 33538/134	2 m ²	1	1	1	0	0	3	A4	
ACM	Cement sheet wall(s)	71 CLNR	16	Refer 33538/160	8 m ²	2	1	1	1	1	6	A3	Including partition walls and cister boxing.
ACM	Cement sheet ceiling(s)	71 CLNR	17	Refer 33538/161	2 m ²	1	1	1	0	0	3	A4	
ACM	Cement sheet infill panel(s)	74 Porch	18	Refer 33538/175	1 m ²	2	1	1	0	0	4	A4	
ACM	Cement sheet infill panel(s)	75 Porch	19	Refer 33538/179	1 m ²	2	1	1	0	0	4	A4	
ACM	Cement sheet ceiling(s)	76 Chair Store	20	Refer 33538/169	30 m ²	1	1	1	1	0	4	A4	
ACM	Cement sheet ceiling(s)	77 Chair Store	21	Refer 33538/169	30 m ²	1	1	1	1	0	4	A4	
ACM	Cement sheet ceiling(s)	79 PE Store	22	Refer 33538/129 & 130	8 m ²	2	1	1	1	0	5	A3	
ACM	Cement sheet wall(s)	79 PE Store	23	Refer 33538/128	20 m ²	2	1	1	1	1	6	A3	
ACM	Cement sheet wall(s)	80 PE Store	24	Refer 33538/170	8 m ²	2	1	1	1	1	6	A3	
ACM	Cement sheet ceiling(s)	80 PE Store	25	Refer 33538/171 & 172	8 m ²	2	1	1	0	0	4	A4	
ACM	Cement sheet ceiling(s)	81 Hall	26	Refer 33538/101	12 m ²	1	1	1	0	0	3	A4	North and South entrances four in total.
ACM	Cement sheet fire hose cupboard lining	81 Hall	27	Refer 33538/132, 158 & 159	20 m ²	2	1	1	1	1	6	A3	
ACM	Cement sheet infill panel(s)	82 Porch	28	Refer 33538/178	1 m ²	2	1	1	0	0	4	A4	
ACM	Cement sheet ceiling(s)	83 Male Staff	29	Refer 33538/119 & 120	8 m ²	2	1	1	1	0	5	A3	
ACM	Cement sheet wall(s)	83 Male Staff	30	Refer 33538/118	25 m ²	2	1	1	0	1	5	A3	
ACM	Cement sheet ceiling(s)	84 Female Staff	31	Refer 33538/103	8 m ²	1	1	1	1	0	4	A4	
ACM	Cement sheet wall(s)	84 Female Staff	32	Refer 33538/102	25 m ²	2	1	1	1	1	6	A3	

Asbestos Materials Register

Hazard Group	Description	Location	Photograph No.	Sample Number	Approx. Quantity	Asbestos Fibre Type	Surface Treatment	Product Type	Condition	Likelihood of Disturbance	Risk Score	Action Rating	Comments
Multi-Purpose Hall													
ACM	Cement sheet cubicle partition(s)	85 Male	33	Refer 33538/123	4 m ²	2	1	1	1	1	6	A3	
ACM	Cement sheet ceiling(s)	85 Male	34	Refer 33538/124	15 m ²	2	1	1	1	0	5	A3	
ACM	Cement sheet wall(s)	85 Male	35	Refer 33538/121 & 122	50 m ²	2	1	1	1	1	6	A3	
ACM	Cement sheet wall(s)	86 Female	36	Refer 33538/104 & 105	50 m ²	1	1	1	1	1	5	A3	
ACM	Cement sheet cubicle partition(s)	86 Female	37	Refer 33538/106	12 m ²	1	1	1	1	1	5	A3	
ACM	Cement sheet ceiling(s)	86 Female	38	Refer 33538/107	15 m ²	1	1	1	1	0	4	A4	
ACM	Cement sheet infill panel(s)	87 Porch	39	Refer 33538/176	1 m ²	2	1	1	0	0	4	A4	
ACM	Cement sheet ceiling(s)	88 Lobby	40	Refer 33538/127	4 m ²	2	1	1	0	0	4	A4	
ACM	Cement sheet wall(s)	88 Lobby	41	Refer 33538/125	12 m ²	2	1	1	0	1	5	A3	Including infill panels.
ACM	Cement sheet infill panel(s)	89 Porch	42	Refer 33538/177	1 m ²	2	1	1	0	0	4	A4	
ACM	Cement sheet wall(s)	90 Lobby	43	Refer 33538/108	15 m ²	1	1	1	1	1	5	A3	
ACM	Cement sheet ceiling(s)	90 Lobby	44	Refer 33538/109	4 m ²	2	1	1	0	0	4	A4	
ACM	Cement sheet wall(s)	91 Cloak	45	Refer 33538/110	30 m ²	2	1	1	1	1	6	A3	
ACM	Cement sheet ceiling(s)	91 Cloak	46	Refer 33538/111	15 m ²	2	1	1	0	0	4	A4	
ACM	Cement sheet ceiling(s)	93 Servery	47	Refer 33538/117	30 m ²	2	1	1	0	0	4	A4	No access at time of assessment. Identified in previous assessment, presumed still present.
ACM	Electrical backing board(s)	93 Servery	48	Visual Observation	1 unit	1	0	1	0	0	2	A5	No access at time of assessment. Identified in previous assessment, presumed still present.
ACM	Cement sheet wall(s)	93 Servery	49	Refer 33538/116	40 m ²	2	1	1	0	1	5	A3	No access at time of assessment. Identified in previous assessment, presumed still present.
ACM	Cement sheet wall(s)	94 Bulk Store	50	Refer 33538/112	30 m ²	2	1	1	1	1	6	A3	
ACM	Cement sheet ceiling(s)	94 Bulk Store	51	Refer 33538/113	15 m ²	2	1	1	0	0	4	A4	
ACM	Cement sheet infill panel(s)	95 Porch	52	Refer 33538/176	14 m ²	2	1	1	0	1	5	A3	

Asbestos Materials Register

Hazard Group	Description	Location	Photograph No.	Sample Number	Approx. Quantity	Asbestos Fibre Type	Surface Treatment	Product Type	Condition	Likelihood of Disturbance	Risk Score	Action Rating	Comments
Multi-Purpose Hall													
ACM	Cement sheet ceiling(s)	95 Porch	53	Refer 33538/114	80 m ²	1	1	1	0	0	3	A4	
ACM	Cement sheet infill panel(s)	130 Covered Way	54	Refer 33538/174	1 m ²	2	1	1	0	0	4	A4	
ACM	Electrical backing board(s)	244 Store	55	Visual Observation	1 unit	1	0	1	0	0	2	A5	No access. Asbestos presumed. Located in Basesment.
ACM	Cement sheet wall(s)	244 Store	56	Refer 33538/180, 181, 183	80 m ²	2	1	1	0	1	5	A3	Including partition wall. No access during assessment. Identified in previous assessment, presumed still present. Located in Basesment
ACM	Cement sheet ceiling(s)	244 Store	57	Refer 33538/182	200 m ²	2	1	1	0	0	4	A4	No access during assessment. Identified in previous assessment, presumed still present. Located in Basesment.
ACM	Cement sheet upper wall(s)	273 Control Platform	58	Refer FI0297	12 m ²	1	1	1	2	1	6	A3	North and South Control Platforms.
ACM	Cement sheet infill panel(s)	External	59	Visual Observation	60 m ²	1	1	1	0	0	3	A4	Above all windows. Asbestos presumed.
ACM	Mastic to block work	External	60	FI0298	300 m ²	1	0	1	0	0	2	A5	
No access was gained within 68 Steps, 69 Steps, 93 Severy, 244 Store and behind walls, floors, subfloors, tiles, urinals, cavities, ceiling voids, plant/machinery, live electrics or to heights above 3m. Limited access below floor coverings, behind wall coverings and where large amounts of stored units were present. These areas may require further investigation.													
Music Block													
ACM	Adhesive under vinyl floor sheet/tiles	98 Instrument Room	61	Refer 33538/186y	70 m ²	1	0	1	0	0	2	A5	Below Carpet.
ACM	Vinyl floor tiles	98 Instrument Room	62	Refer FI0295	70 m ²	1	0	1	1	0	3	A4	Below carpet.
ACM	Vinyl floor tiles	99 Instrument Store	63	Refer FI0295	25 m ²	1	0	1	1	0	3	A4	
ACM	Adhesive under vinyl floor sheet/tiles	99 Instrument Store	64	Refer 33538/186y	25 m ²	1	0	1	0	0	2	A5	
ACM	Vinyl floor tiles	100 Vocal Room	65	FI0295	90 m ²	1	0	1	1	0	3	A4	
ACM	Adhesive under vinyl floor sheet/tiles	100 Vocal Room	66	Refer 33538/186y	90 m ²	1	0	1	0	0	2	A5	
ACM	Adhesive under vinyl floor sheet/tiles	102 Corridor	67	Refer 33538/185y	40 m ²	1	0	1	1	0	3	A4	
ACM	Vinyl tiles	102 Corridor	68	Refer 33538/185x	40 m ²	1	0	1	1	0	3	A4	
ACM	Vinyl tiles	103 Office	69	Refer 33538/187x	15 m ²	1	0	1	0	0	2	A5	

Asbestos Materials Register

Hazard Group	Description	Location	Photograph No.	Sample Number	Approx. Quantity	Asbestos Fibre Type	Surface Treatment	Product Type	Condition	Likelihood of Disturbance	Risk Score	Action Rating	Comments
Music Block													
ACM	Adhesive under vinyl floor sheet/tiles	103 Office	70	Refer 33538/187y	15 m ²	1	0	1	0	0	2	A5	
ACM	Mastic to window(s)	External	71	FI0296	10 Lm	1	0	1	1	0	3	A4	
No access was gained within 96 Boiler and behind walls, floors, subfloors, tiles, urinals, cavities, ceiling voids, plant/machinery, live electrics or to heights above 3m. Limited access below floor coverings, behind wall coverings and where large amounts of stored units were present. These areas may require further investigation.													
Science Wing													
ACM	Cement sheet wall(s)	25 Cleaner	72	Refer 33538/48	15 m ²	1	1	1	2	1	6	A3	
ACM	Mastic to block work	27 Science	73	FI0308	230 m ²	1	0	1	0	0	2	A5	
ACM	Mineral kit(s)	27 Science	74	Visual Observation	11 units	1	1	1	3	3	9	A2	Asbestos presumed. Refer to Asbestos Incident Report, see Appendix F.
ACM	Internal insulation to incubator(s)	30 Store	75	Visual Observation	1 unit	1	1	2	0	0	4	A4	Labmaster. No internal access without significant damage. Asbestos presumed.
ACM	Mastic to duct work joints(s)	35 Store	76	Refer DA7316	1 Lm	1	0	1	1	0	3	A4	
ACM	Cement sheet eaves	External	77	Refer 33538/248, 299- 300, 303-307	220 m ²	2	1	1	0	0	4	A4	
ACM	Cement sheet porch ceiling(s)	External	78	Refer 33538/304 & 306	4 m ²	2	1	1	0	0	4	A4	East and West of 131 Covered Way.
No access was gained within and behind walls, floors, subfloors, tiles, urinals, cavities, ceiling voids, plant/machinery, live electrics or to heights above 3m. Limited access below floor coverings, behind wall coverings and where large amounts of stored units were present. These areas may require further investigation.													
Trade Wing													
ACM	Internal insulation to kiln(s)	3 Clay Store	79	Visual Observation	1 unit	1	1	2	0	0	4	A4	Jetflow. No internal access without significant damage. Asbestos presumed.
ACM	Cement sheet ceiling(s)	8 Corridor	80	Refer 33538/211	110 m ²	1	1	1	1	0	4	A4	
ACM	Cement sheet eaves	External	81	Refer 33538/243, 245, 246, 279, 280 & 285	140 m ²	2	1	1	1	0	5	A3	
ACM	Mastic to window(s)	External	82	FI0303	140 Lm	1	0	1	1	0	3	A4	
No access was gained within and behind walls, floors, subfloors, tiles, urinals, cavities, ceiling voids, plant/machinery, live electrics or to heights above 3m. Limited access below floor coverings, behind wall coverings and where large amounts of stored units were present. These areas may require further investigation.													

Asbestos Materials Register

Hazard Group	Description	Location	Photograph No.	Sample Number	Approx. Quantity	Asbestos Fibre Type	Surface Treatment	Product Type	Condition	Likelihood of Disturbance	Risk Score	Action Rating	Comments
NO ASBESTOS DETECTED													
Commerce Wing													
NAD	Cement sheet infill panel(s)	60 Principal		FI0299		0	-	0	-	-	-		
No access was gained within and behind walls, floors, subfloors, tiles, urinals, cavities, ceiling voids, plant/machinery, live electrics or to heights above 3m. Limited access below floor coverings, behind wall coverings and where large amounts of stored units were present. These areas may require further investigation.													
Science Wing													
NAD	Gauze mats	27 Science		FI0307		0	-	0	-	-	-		
NAD	Insulation	27 Science		FI0306		0	-	0	-	-	-		
NAD	Mastic to window(s)	External		FI0304		0	-	0	-	-	-		
No access was gained within and behind walls, floors, subfloors, tiles, urinals, cavities, ceiling voids, plant/machinery, live electrics or to heights above 3m. Limited access below floor coverings, behind wall coverings and where large amounts of stored units were present. These areas may require further investigation.													
Trade Wing													
NAD	Mastic to window(s)	External		FI0302		0	-	0	-	-	-		East section of the TradeWing
NAD	Mastic to block work	External		FI0301		0	-	0	-	-	-		
No access was gained within and behind walls, floors, subfloors, tiles, urinals, cavities, ceiling voids, plant/machinery, live electrics or to heights above 3m. Limited access below floor coverings, behind wall coverings and where large amounts of stored units were present. These areas may require further investigation.													
ATC Main Building													
NAD	No asbestos was detected or suspected within the ATC Main Building during the assessment.												
No access was gained within and behind walls, floors, subfloors, tiles, urinals, cavities, ceiling voids, plant/machinery, live electrics or to heights above 3m. Limited access below floor coverings, behind wall coverings and where large amounts of stored units were present. These areas may require further investigation.													
Stem Centre													
NAD	No asbestos was detected or suspected within the Stem Centre during the assessment.												
No access was gained within and behind walls, floors, subfloors, tiles, urinals, cavities, ceiling voids, plant/machinery, live electrics or to heights above 3m. Limited access below floor coverings, behind wall coverings and where large amounts of stored units were present. These areas may require further investigation.													
Bike Shelter													
NAD	No asbestos was detected or suspected within the Bike Shelter during the assessment.												
No access was gained within and behind walls, floors, subfloors, tiles, urinals, cavities, ceiling voids, plant/machinery, live electrics or to heights above 3m. Limited access below floor coverings, behind wall coverings and where large amounts of stored units were present. These areas may require further investigation.													

Asbestos Materials Register

Hazard Group	Description	Location	Photograph No.	Sample Number	Approx. Quantity	Asbestos Fibre Type	Surface Treatment	Product Type	Condition	Likelihood of Disturbance	Risk Score	Action Rating	Comments
Storage Shed													
NAD	No asbestos was detected or suspected within the Storage Shed during the assessment.												
No access was gained within and behind walls, floors, subfloors, tiles, urinals, cavities, ceiling voids, plant/machinery, live electrics or to heights above 3m. Limited access below floor coverings, behind wall coverings and where large amounts of stored units were present. These areas may require further investigation.													
Tractor Shed													
NAD	No asbestos was detected or suspected within the Tractor Shed during the assessment.												
No access was gained within and behind walls, floors, subfloors, tiles, urinals, cavities, ceiling voids, plant/machinery, live electrics or to heights above 3m. Limited access below floor coverings, behind wall coverings and where large amounts of stored units were present. These areas may require further investigation.													
School Grounds													
NAD	No asbestos was detected or suspected within the School Grounds during the assessment.												
No access was gained below the surface of the school grounds during the assessment. These areas may require further investigation.													
The location(s) of any samples which did not contain asbestos taken during a previous asbestos assessment are described in Appendix B.													

Appendix B

Analytical Report

Bulk Identification Report

Job No: 754-MELEN230899 Sunshine College C4 20112019
Client: Victorian School Building Authority
Client Address: 33 St Andrews Place,
 East Melbourne, 3002

Contact: N/A
E-mail: asbestos.reform@edumail.vic.gov.au
Date Sampled: 13/11/2019
Date Printed: 20/11/2019
Sampled By: James Bracken
Site: Sunshine College



Accredited for compliance with ISO/IEC 17025 - Testing
 Accreditation No:2220
 Corporate Site No:16909

Please note: In accepting the results, you (the client) agree that Coffey Services Australia Pty Ltd does not accept any responsibility for the sample submitted in relation to its source and is not liable for any works undertaken at site based on the analytical data provided. Only the samples submitted for analysis have been considered in presenting these results. Should any other material suspected to contain asbestos be found at the site, then works should cease and a suitably trained asbestos hygienist should be engaged to sample or assess the material.

Asbestos in Bulk Samples and Non-homogenous Material

Test Method: Coffey analyses bulk samples for asbestos using polarising light microscopy and dispersion staining techniques in accordance with Coffey SOP WILAB1, and Australian Standard (AS) 4964 – 2004, Method for the qualitative identification of asbestos in bulk samples (AS 4964). The detection limit for the test method as per AS 4964 is 0.1 g/kg. For non-homogenous samples a semi quantitative aspect is adopted for the test method and is taken into account when reporting the results. As per Coffey's NATA approved SOP WILAB1 sample retention periods are set at 1 month (no asbestos detected) and 3 months (asbestos detected).

Total Samples: 12

Matthew Tang
 Approved Identifier

Patricy Cortes
 Approved Signatory

Sample No.	Location & Description	Sample Size	Results
FI0295	Vinyl floor tiles, 100 Vocal Room, Music Block - Beige semi-flexible vinyl tile & black adhesive	~ 70 x 65 x 4 mm	Chrysotile (white asbestos) detected
FI0296	Mastic to window(s), External , Music Block - Grey sticky mastic material	~ 32 x 28 x 4 mm	Chrysotile (white asbestos) detected
FI0297	Cement sheet upper wall(s), 67 Platform , Multi-Purpose Hall - Peach layered fibre cement sheet material	~ 24 x 20 x 4 mm	Chrysotile (white asbestos) detected Organic fibres detected
FI0298	Mastic to block work, External , Multi-Purpose Hall - Grey hardened mastic material	~ 55 x 45 x 18 mm	Chrysotile (white asbestos) detected
FI0299	Cement sheet infill panel(s), 60 Principal , Commerce Wing - Grey layered fibre cement sheet material with attached beige paint	~ 20 x 16 x 4 mm	No asbestos fibres detected Organic fibres detected
FI0300	Cement sheet infill panel(s), 55 FSWC , Commerce Wing - Beige layered fibre cement sheet material	~ 14 x 11 x 4 mm	Chrysotile (white asbestos) detected Organic fibres detected
FI0301	Mastic to block work, External , Trade Wing - Beige hardened mastic material	~ 34 x 18 x 4 mm	No asbestos fibres detected
FI0302	Mastic to window(s), External , Trade Wing - Beige hardened mastic material	~ 45 x 38 x 5 mm	No asbestos fibres detected
FI0303	Mastic to window(s), External , Trade Wing - Black sticky mastic material	~ 13 x 11 x 3 mm	Chrysotile (white asbestos) detected

Sample No.	Location & Description	Sample Size	Results
FI0304	Mastic to window(s), External , Science Wing - Brown sticky mastic material	~ 70 x 4 x 3 mm	No asbestos fibres detected
FI0305	Mastic to block work, External , Commerce Wing - Grey/red hardened mastic material	~ 18 x 17 x 4 mm	Chrysotile (white asbestos) detected
FI0308	Mastic to block work, External , Science Wing - Grey/red hardened mastic material	~ 21 x 18 x 4 mm	Chrysotile (white asbestos) detected

This Document may not be reproduced except in full.

Bulk Identification Report

Job No: 754-MELEN233430 Sunshine College 18112019
Client: Victorian School Building Authority
Client Address: 33 St Andrews Place,
 East Melbourne, 3002

Contact: N/A
E-mail: asbestos.reform@edumail.vic.gov.au
Date Sampled: 14/11/2019
Date Printed: 18/11/2019
Sampled By: James Bracken
Site: 18 Withers St, Sunshine VIC 3020



Accredited for compliance with ISO/IEC 17025 - Testing
 Accreditation No:2220
 Corporate Site No:16909

Please note: In accepting the results, you (the client) agree that Coffey Services Australia Pty Ltd does not accept any responsibility for the sample submitted in relation to its source and is not liable for any works undertaken at site based on the analytical data provided. Only the samples submitted for analysis have been considered in presenting these results. Should any other material suspected to contain asbestos be found at the site, then works should cease and a suitably trained asbestos hygienist should be engaged to sample or assess the material.

Asbestos in Bulk Samples and Non-homogenous Material

Test Method: Coffey analyses bulk samples for asbestos using polarising light microscopy and dispersion staining techniques in accordance with Coffey SOP WILAB1, and Australian Standard (AS) 4964 – 2004, Method for the qualitative identification of asbestos in bulk samples (AS 4964). The detection limit for the test method as per AS 4964 is 0.1 g/kg. For non-homogenous samples a semi quantitative aspect is adopted for the test method and is taken into account when reporting the results. As per Coffey's NATA approved SOP WILAB1 sample retention periods are set at 1 month (no asbestos detected) and 3 months (asbestos detected).

Total Samples: 2

Matthew Tang
 Approved Identifier

Patricy Cortes
 Approved Signatory

Sample No.	Location & Description	Sample Size	Results
F10306	Insulation Insulation, 27 Science , Science Wing - Red/brown/white fibrous insulation material	~ 30 x 10 x 3 mm	No asbestos fibres detected Organic fibres detected Synthetic mineral fibres detected
F10307	Gauze mats , 27 Science , Science Wing - Grey speckled coating-like material	~ 11 x 10 x 3 mm	No asbestos fibres detected

This Document may not be reproduced except in full.

BENDIGO RELOCATABLE BUILDINGS

Sunshine SC North Campus Portable 5794

ASBESTOS IDENTIFICATION REPORT

Job No: 16102

29 May 2006


SAMPLE INFORMATION		ANALYSIS INFORMATION		
SAMPLED BY: ALERT SOLUTIONS		EXAMINATION BY POLARISED LIGHT MICROSCOPY		
DATE RECEIVED: 29/05/06		INCLUDING DISPERSION STAINING		
		(ALERT SOLUTIONS TEST METHOD NO. 1)		
SAMPLE NO.	SAMPLE LOCATION	SAMPLE DESCRIPTION	MASS (g)	RESULTS OF EXAMINATION (asbestos type detected)
I77668	Porch floor	Fibro-cement	1	Asbestos NOT Detected
I77669	Eaves	Fibro-cement	1	Asbestos NOT Detected
I77670	Eaves	Fibro-cement	1	Asbestos NOT Detected
I77671	Eaves	Fibro-cement	1	Asbestos NOT Detected
I77672	Eaves	Fibro-cement	1	Asbestos NOT Detected
I77673	Eaves	Fibro-cement	1	Asbestos NOT Detected
I77674	Skirting	Brown vinyl	1	Asbestos NOT Detected *

* Confirmation by another independent analytical technique is advised due to nature of the sample.



**NATA Accredited
Laboratory - No: 3977**

The tests, calibrations or measurements covered by this document have been performed in accordance with NATA requirements which include the requirements of ISO/IEC 17025 and are traceable to national standards of measurement. This document shall not be reproduced, except in full.



PAUL LUDOWYK
NATA Approved Identifier

Page 1 of 1



PAUL LUDOWYK
NATA Approved Signatory



Liability & Risk Management Consulting

LRM Global Pty Ltd
65 Stubbs Street
Kensington VIC 3031

Fax:
Email:
Web:
Telephone:
ABN:

(03) 9371 3499
enquiries@lrimglobal.com.au
www.lrimglobal.com.au
(03) 9371 3400
34 116 540 277

Coffey Environmental Pty Ltd
Level 1, 436, Johnston Street
Abbotsford Victoria 3067

Client Ref: Sunshine Secondary College Campus 4

Job Number: 17458.000

Batch Number: -

Received Date: May 08, 2015

Analysed Date: May 11, 2015

No of Samples: 8

Dear Daniela Tartaglia,

This report presents the analytical results of samples forwarded by Coffey Environmental Pty Ltd for asbestos analysis.

Methodology:

The samples were examined under a Stereo Microscope and selected fibres were analysed by Polarized Light Microscopy in conjunction with Dispersion Staining Method. (LRM Global ID Method 1)

Analytical Results:

Sample No.	Sample Description	Result
DA7314	The sample consisted of millboard material Location: Science wing- 35 Store- lining to hotplate Sample Dimensions: 0.2cm X 0.2cm X 0.2cm	Chrysotile Asbestos Detected
DA7315	The sample consisted of millboard material Location: Science Wing- 35 store- lining to hotplate Sample Dimensions: 0.2cm X 0.2cm X 0.2cm	No Asbestos Detected Organic Fibre Detected *Unidentified Mineral Fibre Detected
DA7318	The sample consisted of fibro plaster cement Location: Science wing- 35 Science- heat mat Sample Dimensions: 0.1cm X 0.1cm X 0.1cm	Chrysotile Asbestos Detected Organic Fibre Detected
DA7320	The sample consisted of fibro plaster cement Location: Science Wing- 33 Science- gauze mats Sample Dimensions: 8.0cm X 5.0cm X 0.1cm	No Asbestos Detected Synthetic Mineral Fibre Detected
DA7325	The sample consisted of fibro plaster cement Location: Multipurpose Hall- C4 Prep Store- floor Sample Dimensions: 4.0cm X 3.0cm X 0.2cm	Amosite Asbestos Detected Chrysotile Asbestos Detected Organic Fibre Detected

DA7321	The sample consisted of fibro plaster cement Location: Commerce wing- 264 Store- floor Sample Dimensions: 4.0cm X 3.0cm X 0.3cm	Amosite Asbestos Detected Chrysotile Asbestos Detected
DA7322	The sample consisted of fibro plaster cement Location: Commerce Wing- 264 Store- floor Sample Dimensions: 4.0cm X 3.0cm X 0.3cm	No Asbestos Detected Organic Fibre Detected
DA7323	The sample consisted of lining Location: Commerce Wing- 57 Resource- filling cabinet Sample Dimensions: 0.3cm X 0.3cm X 0.3cm	Chrysotile Asbestos Detected Organic Fibre Detected

*Unidentified mineral fibers detected. For identity another analytical method may be required



Approved Identifier
Karu Jayasundara



Report Issued by
Karu Jayasundara



Accredited for compliance with ISO/IEC 17025
The results of the tests, calibrations and/or measurements
included in this document are traceable to Australian
Standards.



LRM Global Pty Ltd
65 Stubbs Street
Kensington VIC 3031

Fax: (03) 9371 3499
Email: enquiries@lrnglobal.com.au
Web: www.lrnglobal.com.au
Telephone: (03) 9371 3400
ABN: 34 116 540 277

Coffey Environmental Pty Ltd
Level 1, 436, Johnston Street
Abbotsford Victoria 3067

Client Ref: Sunshine Secondary College Campus 4

Job Number: 17478.000

Batch Number: -

Received Date: May 11, 2015

Analysed Date: May 12, 2015

No of Samples: 5

Dear Daniela Tartaglia,

This report presents the analytical results of samples forwarded by Coffey Environmental Pty Ltd for asbestos analysis.

Methodology:

The samples were examined under a Stereo Microscope and selected fibres were analysed by Polarized Light Microscopy in conjunction with Dispersion Staining Method. (LRM Global ID Method 1)

Analytical Results:

Sample No.	Sample Description	Result
DA7324	The sample consisted of fibro plaster cement Location: Trade Wing- 5 Art 3D Activity Area- wall- west wall Sample Dimensions: 0.3cm X 0.3cm X 0.3cm	No Asbestos Detected Organic Fibre Detected
DA7313	The sample consisted of fibro plaster cement Location: Science Wing- 33 Science- panel which lines the interior of the fume cupboard Sample Dimensions: 0.1cm X 0.1cm X 0.1cm	No Asbestos Detected Organic Fibre Detected
DA7316	The sample consisted of mastic Location: Science Wing- 35 Store- seal to A/C duct flange Sample Dimensions: 1.0cm X 1.0cm X 0.1cm	Chrysotile Asbestos Detected
DA7317	The sample consisted of fibro plaster cement Location: Science Wing- 30 Store- cupboard panel Sample Dimensions: 1.0cm X 1.0cm X 0.2cm	No Asbestos Detected Organic Fibre Detected
DA7319	The sample consisted of fibro plaster cement Location: Science Wing- 30 Store- fume cupboard backing Sample Dimensions: 0.1cm X 0.1cm X 0.1cm	No Asbestos Detected Organic Fibre Detected



Approved Identifier
Karu Jayasundara



Report Issued by
Karu Jayasundara



Accredited for compliance with ISO/IEC 17025
The results of the tests, calibrations and/or
measurements included in this document are traceable to
Australian Standards.



Risk Management Services

NOEL ARNOLD & ASSOCIATES PTY LTD
A.C.N. 009 312 910 A.B.N. 79 036 344 069
Level 2, 818 Whitehorse Rd,
Box 255, Victoria 3128 Australia
Phone: (03) 9590 8811
Fax: (03) 9590 8911
Email: melbourne@noel-arnold.com.au
www.noel-arnold.com.au

10 June 2004

Our Ref: 33538
33538_bsa.doc
MS02440cd

Henry Flannery
Sinclair Knight Merz
590 Orrong Road
ARMADALE VIC 3143

Dear Henry

Re: Bulk Sample Analysis: Asbestos Fibre Identification

This letter presents the results of asbestos fibre identification analysis performed on samples collected by Amanda Percival & Rob Sarragham, Noel Arnold & Associates Pty Ltd on 2nd & 4th June 2004. Samples were collected from Sunshine Secondary College (Sunshine North).

All sample analysis was performed in accordance with Noel Arnold and Associates Pty Ltd Method Number 2 in our Melbourne Laboratory by Corey Bannister & Mahendra Singh.

The results of the asbestos identification analysis are presented in the appended table.

Should you require further information please contact the undersigned.

Yours sincerely

NOEL ARNOLD AND ASSOCIATES PTY LTD

PAUL ADDISON
Approved Signatory

Date: 20 / 06 / 04



NATA ENDORSED DOCUMENT

National Association of Testing Authorities, Australia

This document may not be reproduced except in full

Accredited Laboratory Number: 5450

Sampling not covered by the terms of the NATA accreditation.

33538

SAMPLE ANALYSIS RESULTS

Page 2 of 33

Sample No.	Description/Sample Size	Analysis Result
33538/01	Commerce Wing - Plant 46 - cement sheet wall - cream painted grey cement sheet material - 1 cm ³	No Asbestos Fibres Detected
33538/02	Commerce Wing - Plant 46 - cement sheet ceiling - cream painted grey cement sheet material - 1 cm ³	No Asbestos Fibres Detected
33538/03	Commerce Wing - Porch 263 - compressed cement sheet wall - cream painted grey cement sheet material - 1 cm ³	No Asbestos Fibres Detected
33538/04	Commerce Wing - Porch 263 - cement sheet ceiling - cream painted grey cement sheet material - <1 cm ³	No Asbestos Fibres Detected
33538/05	Commerce Wing - Corridor 40 - sheet vinyl floor covering - cream flexible vinyl material - 1 cm ³	No Asbestos Fibres Detected ^{Note 1}
33538/06 X	Commerce Wing - Corridor 40 - sheet vinyl floor covering - grey flexible vinyl material - >4 cm ³	No Asbestos Fibres Detected ^{Note 1}
33538/06 Y	Commerce Wing - Corridor 40 - sheet vinyl floor covering - brown cement material with grey flexible vinyl material - <1 cm ³	No Asbestos Fibres Detected
33538/07	Commerce Wing - Porch 265 - compressed cement sheet wall - grey cement sheet material - 1 cm ³	No Asbestos Fibres Detected
33538/08	Commerce Wing - Porch 265 - compressed cement sheet infill panel - south east and south west corners - cream painted grey cement sheet material - 1 cm ³	No Asbestos Fibres Detected
33538/09	Commerce Wing - Porch 265 - cement sheet ceiling - cream painted grey cement sheet material - <1 cm ³	No Asbestos Fibres Detected
33538/10	Commerce Wing - Porch 263 - compressed cement sheet corner infill panel - cream painted grey cement sheet material - 2 cm ³	No Asbestos Fibres Detected

All samples analysed by polarised light microscopy, including dispersion staining.

Note 1 (Applies only if present in Analysis Result): Confirmation by another analytical technique advised due to the nature of the sample.

33538

SAMPLE ANALYSIS RESULTS

Page 3 of 33

Sample No.	Description/Sample Size	Analysis Result
33538/11	Commerce Wing - Staffroom 62 - sheet vinyl floor covering - pale blue flexible vinyl material - 2 cm ³	No Asbestos Fibres Detected ^{Note 1}
33538/12	Commerce Wing - Staffroom 62 cement sheet infill panel for air conditioning unit - yellow painted grey cement sheet material - <1 cm ³	No Asbestos Fibres Detected
33538/13	Commerce Wing - Male WC 58 - cement sheet partition wall - cream painted grey cement sheet material - <1 cm ³	No Asbestos Fibres Detected
33538/14	Commerce Wing - Male WC 58 - cement sheet wall - white painted grey cement sheet material - 1 cm ³	No Asbestos Fibres Detected
33538/15	Commerce Wing - Male WC 58 - sheet vinyl floor covering - grey flexible vinyl material - 1 cm ³	No Asbestos Fibres Detected ^{Note 1}
33538/16	Commerce Wing - FWC 228 - cement sheet wall - cream painted grey cement sheet material - <1 cm ³	No Asbestos Fibres Detected
33538/17 X	Commerce Wing - FWC 228 - sheet vinyl floor covering - light blue flexible vinyl material - <1 cm ³	No Asbestos Fibres Detected ^{Note 1}
33538/17 Y	Commerce Wing - FWC 228 - sheet vinyl floor covering - brown fibrous material on light blue flexible vinyl material - <1 cm ³	No Asbestos Fibres Detected
33538/18	Commerce Wing - Male 227 - cement sheet wall - cream painted grey cement sheet material - 1 cm ³	No Asbestos Fibres Detected
33538/19	Commerce Wing - Male 227 - sheet vinyl floor covering - pale blue flexible vinyl material - 1 cm ³	No Asbestos Fibres Detected ^{Note 1}
33538/20	Commerce Wing - Principal 60 - cement sheet infill panel for air conditioning unit - yellow painted grey cement sheet material - <1 cm ³	No Asbestos Fibres Detected
33538/21x	Commerce Wing - Porch 269 - sheet vinyl floor covering - cream flexible vinyl material - 1 cm ³	No Asbestos Fibres Detected ^{Note 1}

All samples analysed by polarised light microscopy, including dispersion staining.

Note 1 (Applies only if present in Analysis Result): Confirmation by another analytical technique advised due to the nature of the sample.

33538

SAMPLE ANALYSIS RESULTS

Page 4 of 33

Sample No.	Description/Sample Size	Analysis Result
33538/21y	Commerce Wing - Porch 269 - sheet vinyl floor covering - brown fibrous material on cream flexible vinyl - 1 cm ³	No Asbestos Fibres Detected
33538/22	Commerce Wing - Porch 226 - cement sheet ceiling - white painted grey cement sheet material - <1 cm ³	No Asbestos Fibres Detected
33538/23	Commerce Wing - Porch 226 - cement sheet infill panel above doors - grey painted grey cement sheet material - <1 cm ³	No Asbestos Fibres Detected
33538/24 X	Commerce Wing - GPC Store 56 - sheet vinyl floor covering - light blue flexible vinyl material - 1 cm ³	No Asbestos Fibres Detected ^{Note 1}
33538/24 Y	Commerce Wing - GPC Store 56 - sheet vinyl floor covering - brown fibrous material on light blue flexible vinyl material - <1 cm ³	No Asbestos Fibres Detected
33538/25	Commerce Wing - Resource 57 - sheet vinyl floor covering - light blue flexible vinyl material - 1 cm ³	No Asbestos Fibres Detected ^{Note 1}
33538/26	Science Wing - Covered Link 131 - sheet vinyl floor covering - light blue rigid vinyl material - 1 cm ³	No Asbestos Fibres Detected ^{Note 1}
33538/27 X	Science Wing - Covered Link 131 - sheet vinyl floor covering - cream flexible vinyl material - 1 cm ³	No Asbestos Fibres Detected ^{Note 1}
33538/27 Y	Science Wing - Covered Link 131 - sheet vinyl floor covering - brown fibrous material on cream flexible vinyl material - <1 cm ³	No Asbestos Fibres Detected
33538/28	Science Wing - Corridor 28 - sheet vinyl floor covering - light blue flexible vinyl material - 1 cm ³	No Asbestos Fibres Detected ^{Note 1}
33538/29	Science Wing - Corridor 28 - sheet vinyl floor covering - cream flexible vinyl material - 1 cm ³	No Asbestos Fibres Detected ^{Note 1}
33538/30	Science Wing - Science 27 - cement sheet heat pad - grey cement sheet material - 1 cm ³	Chrysotile (White Asbestos)

All samples analysed by polarised light microscopy, including dispersion staining.

Note 1 (Applies only if present in Analysis Result): Confirmation by another analytical technique advised due to the nature of the sample.

33538

SAMPLE ANALYSIS RESULTS

Page 5 of 33

Sample No.	Description/Sample Size	Analysis Result
33538/31	Science Wing - Store 191 - sheet vinyl floor covering - cream speckled flexible vinyl material - 2 cm ³	No Asbestos Fibres Detected ^{Note 1}
33538/32	Science Wing - Staff Work 29 - sheet vinyl floor covering - cream speckled flexible vinyl material - 2 cm ³	No Asbestos Fibres Detected ^{Note 1}
33538/33	Science Wing - Change/Shower 192 - cement sheet wall - yellow painted grey cement sheet material - 1 cm ³	No Asbestos Fibres Detected
33538/34	Science Wing - Change/Shower 192 - cement sheet partition wall - yellow painted grey cement sheet material - <1 cm ³	No Asbestos Fibres Detected
33538/35	Science Wing - Change/Shower 192 - sheet vinyl floor covering - cream speckled flexible vinyl material - 1 cm ³	No Asbestos Fibres Detected ^{Note 1}
33538/36	Science Wing - Time Out 193 - sheet vinyl floor covering - cream speckled flexible vinyl material - 1 cm ³	No Asbestos Fibres Detected ^{Note 1}
33538/37	Science Wing - Science 33 - cement sheet repair panel floor area under sink - brown cement sheet material - 1 cm³	Amosite (Brown Asbestos)
33538/38	Science Wing - Science 33 - cement sheet heat mats - grey cement sheet material - <1 cm ³	No Asbestos Fibres Detected
33538/39	Science Wing - Store 35 - cement sheet heat mats - grey cement sheet material - 1 cm³	Chrysotile (White Asbestos)
33538/40	Science Wing - Science 37 - cement sheet heat mats - grey cement sheet material - 1 cm ³	No Asbestos Fibres Detected
33538/41	Science Wing - Store 30 - cement sheet lined cupboard - grey cement sheet material - <1 cm ³	No Asbestos Fibres Detected
33538/42	Science Wing - Store 30 - rope seal to flammable liquids cupboard - white fibrous woven material - <1 cm ³	No Asbestos Fibres Detected

All samples analysed by polarised light microscopy, including dispersion staining.

Note 1 (Applies only if present in Analysis Result): Confirmation by another analytical technique advised due to the nature of the sample.

33538

SAMPLE ANALYSIS RESULTS

Page 6 of 33

Sample No.	Description/Sample Size	Analysis Result
33538/43	Science Wing - Science 27 - gauze mat (square) - brown granular material on wire gauze - 1 cm ³	Chrysotile (White Asbestos)
33538/44	Science Wing - Science 27 - gauze mat (round) - white granular material on wire gauze - 1 cm ³	No Asbestos Fibres Detected
33538/45	Science Wing - Porch 272 - compressed cement sheet corner infill panel - yellow painted grey cement sheet material - 1 cm ³	No Asbestos Fibres Detected
33538/46	Science Wing - Porch 272 - compressed cement sheet wall - yellow painted grey cement sheet material - 2 cm ³	No Asbestos Fibres Detected
33538/47	Science Wing - Porch 272 - cement sheet ceiling - yellow painted grey cement sheet material - <1 cm ³	No Asbestos Fibres Detected
33538/48	Science Wing - Cleaner 25 - cement sheet wall, east - green painted grey cement sheet material - <1 cm ³	Chrysotile (White Asbestos)
33538/49	Science Wing - Cleaner 25 - cement sheet infill panel for window in door - grey cement sheet material - <1 cm ³	No Asbestos Fibres Detected
33538/50	Science Wing - Class Sets 213 - sheet vinyl floor covering - light blue flexible vinyl material - 1 cm ³	No Asbestos Fibres Detected ^{Note 1}
33538/51	Science Wing - A/V Store 214 - sheet vinyl floor covering - grey flexible vinyl material - 3 cm ³	No Asbestos Fibres Detected ^{Note 1}
33538/52	Commerce Wing - DIS WC 241 - cement sheet wall - cream painted grey cement sheet material - 1 cm ³	No Asbestos Fibres Detected
33538/53	Commerce Wing - FS WC 55 - cement sheet wall - white painted brown cement sheet material - 1 cm ³	No Asbestos Fibres Detected
33538/54	Commerce Wing FS WC 55 - cement sheet cubicle wall - cream painted brown cement sheet material - 1 cm ³	No Asbestos Fibres Detected

All samples analysed by polarised light microscopy, including dispersion staining.

Note 1 (Applies only if present in Analysis Result): Confirmation by another analytical technique advised due to the nature of the sample.

33538

SAMPLE ANALYSIS RESULTS

Page 7 of 33

Sample No.	Description/Sample Size	Analysis Result
33538/55	Commerce Wing - FS WC 55 - sheet vinyl floor covering - grey flexible vinyl material - 3 cm ³	No Asbestos Fibres Detected ^{Note 1}
33538/56	Commerce Wing - Parents Interview 54 - millboard lining green desk - white fibrous material - <1 cm ³	Chrysotile (White Asbestos)
33538/57	Science Wing - Plant 21 - mastic from inlet valve on boiler - black mastic material - <1 cm ³	No Asbestos Fibres Detected ^{Note 1}
33538/58	Science Wing - Plant 21 - rope sealant to valve on Boiler 1 - brown fibrous material - <1 cm ³	No Asbestos Fibres Detected
33538/59	Science Wing - Plant 21 - rope sealant from pipes on west wall - brown mastic material - <1 cm ³	No Asbestos Fibres Detected ^{Note 1}
33538/60	Science Wing - Plant 21 - gasket mastic from pipes on west wall - yellow fibrous material - <1 cm ³	No Asbestos Fibres Detected
33538/61	Science Wing - Plant 21 - gasket mastic from outlet on Boiler 3 - black mastic material - <1 cm ³	No Asbestos Fibres Detected ^{Note 1}
33538/62	Science Wing - Plant 21 - rope sealant on pipes to hot water service - brown fibrous material - <1 cm ³	No Asbestos Fibres Detected ^{Note 1}
33538/63	Science Wing - Lobby 256 - sheet vinyl floor covering - grey flexible vinyl material - 3 cm ³	No Asbestos Fibres Detected ^{Note 1}
33538/64	Science Wing - Lobby 256 - sheet vinyl floor covering - beige flexible vinyl material - >4 cm ³	No Asbestos Fibres Detected ^{Note 1}
33538/65	Science Wing - Lobby 256 - cement sheet wall - cream painted grey cement sheet material - 1 cm ³	No Asbestos Fibres Detected
33538/66	Science Wing - Porch 255 - cement sheet wall - grey cement sheet material - 1 cm ³	No Asbestos Fibres Detected
33538/67	Science Wing - Porch 255 - compressed cement sheet corner infill panel - cream painted grey cement sheet material - 1 cm ³	No Asbestos Fibres Detected

All samples analysed by polarised light microscopy, including dispersion staining.

Note 1 (Applies only if present in Analysis Result): Confirmation by another analytical technique advised due to the nature of the sample.

33538

SAMPLE ANALYSIS RESULTS

Page 8 of 33

Sample No.	Description/Sample Size	Analysis Result
33538/68	Science Wing - Porch 255 - cement sheet ceiling - cream painted grey cement sheet material - 2 cm ³	No Asbestos Fibres Detected
33538/69	Science Wing - Ramp 257 - cement sheet wall - cream painted grey cement sheet material - 1 cm ³	No Asbestos Fibres Detected
33538/70	Science Wing - Corridor 221 - cement sheet wall - cream painted grey cement sheet material - 1 cm ³	No Asbestos Fibres Detected
33538/71	Science Wing - Corridor 221 - sheet vinyl floor covering - beige flexible vinyl material - 3 cm ³	No Asbestos Fibres Detected ^{Note 1}
33538/72	Science Wing - Corridor 221 - sheet vinyl floor covering - grey flexible vinyl material - 2 cm ³	No Asbestos Fibres Detected ^{Note 1}
33538/73	Science Wing - Store 223 - sheet vinyl floor covering - grey flexible vinyl material - 1 cm ³	No Asbestos Fibres Detected ^{Note 1}
33538/74	Science Wing - Textiles 222 - sheet vinyl floor covering - grey flexible vinyl material - 2 cm ³	No Asbestos Fibres Detected ^{Note 1}
33538/75	Science Wing - Store 224 - sheet vinyl floor covering - grey flexible vinyl material - 2 cm ³	No Asbestos Fibres Detected ^{Note 1}
33538/76	Science Wing - Store 223 - sheet vinyl floor covering - grey flexible vinyl material - 1 cm ³	No Asbestos Fibres Detected ^{Note 1}
33538/77 X	Science Wing - Store 237 - sheet vinyl floor covering - blue flexible vinyl material - 1 cm ³	No Asbestos Fibres Detected ^{Note 1}
33538/77 Y	Science Wing - Store 237 - sheet vinyl floor covering - grey granular material - 1 cm ³	No Asbestos Fibres Detected
33538/78	Science Wing - Porch 270 - compressed cement sheet wall - cream painted grey cement sheet material - <1 cm ³	No Asbestos Fibres Detected

All samples analysed by polarised light microscopy, including dispersion staining.

Note 1 (Applies only if present in Analysis Result): Confirmation by another analytical technique advised due to the nature of the sample.

33538

SAMPLE ANALYSIS RESULTS

Page 9 of 33

Sample No.	Description/Sample Size	Analysis Result
33538/79	Science Wing - Porch 270 - compressed cement sheet corner infill panel - cream painted grey cement sheet material - <1 cm ³	No Asbestos Fibres Detected
33538/80	Science Wing - Porch 270 - cement sheet ceiling - cream painted grey cement sheet material - 1 cm ³	No Asbestos Fibres Detected
33538/81	Science Wing - Porch 271 - compressed cement sheet wall - cream painted grey cement sheet material - <1 cm ³	No Asbestos Fibres Detected
33538/82	Science Wing - Porch 271 - compressed cement sheet corner infill panel - cream painted grey cement sheet material - <1 cm ³	No Asbestos Fibres Detected
33538/83	Science Wing - Porch 271 - cement sheet ceiling - cream painted grey cement sheet material - 1 cm ³	No Asbestos Fibres Detected
33538/84	Science Wing - A/L 218 - cement sheet partition wall - cream painted grey cement sheet material - 2 cm ³	No Asbestos Fibres Detected
33538/85	Science Wing - A/L 218 - cement sheet wall - cream painted grey cement sheet material - 2 cm ³	No Asbestos Fibres Detected
33538/86	Science Wing - DIS WC 259 - cement sheet wall - cream painted grey cement sheet material - 1 cm ³	No Asbestos Fibres Detected
33538/87	Science Wing - Boys 18 - cement sheet wall - cream painted grey cement sheet material - 3 cm ³	No Asbestos Fibres Detected
33538/88	Science Wing - DIS WC 260 - cement sheet wall - cream painted grey cement sheet material - 3 cm ³	No Asbestos Fibres Detected
33538/89	Science Wing - A/L 216 - cement sheet partition wall - grey cement sheet material - 1 cm ³	No Asbestos Fibres Detected
33538/90	Science Wing - A/L 216 - cement sheet wall - cream painted grey cement sheet material - 1 cm ³	No Asbestos Fibres Detected

All samples analysed by polarised light microscopy, including dispersion staining.

Note 1 (Applies only if present in Analysis Result): Confirmation by another analytical technique advised due to the nature of the sample.

33538

SAMPLE ANALYSIS RESULTS

Page 10 of 33

Sample No.	Description/Sample Size	Analysis Result
33538/91	Science Wing - Girls 217 - cement sheet wall, south of Computers 238 - cream painted grey cement sheet material - 2 cm ³	No Asbestos Fibres Detected
33538/92	Science Wing - Covered Way 128 - compressed cement sheet wall - cream painted grey cement sheet material - 2 cm ³	No Asbestos Fibres Detected
33538/93	Science Wing - Covered Way 128 - compressed cement sheet wall - grey cement sheet material - 4 cm ³	No Asbestos Fibres Detected
33538/94	Science Wing - Covered Way 128 - cement sheet ceiling - cream painted grey cement sheet material - 1 cm ³	No Asbestos Fibres Detected
33538/95	Portable 5794 - External - cement sheet eaves, front left - white painted brown cement sheet material - 1 cm ³	No Asbestos Fibres Detected
33538/96	Portable 5794 - External - cement sheet eaves, front right - white painted grey cement sheet material - 2 cm ³	No Asbestos Fibres Detected
33538/97	Portable 5794 - External - cement sheet eaves, rear right - white painted brown cement sheet material - 1 cm ³	No Asbestos Fibres Detected
33538/98	Portable 5794 - External - cement sheet eaves, rear left - white painted brown cement sheet material - 1 cm ³	No Asbestos Fibres Detected
33538/99	Portable 5794 - compressed cement sheet porch floor - brown cement sheet material - 1 cm ³	No Asbestos Fibres Detected
33538/100	Portable 5794 - cement sheet repair panel wall - white painted grey cement sheet material - 1 cm ³	No Asbestos Fibres Detected
33538/101	Multipurpose Hall - Hall 81 - cement sheet ceiling - white painted pink cement sheet material - 2 cm ³	Chrysotile (White Asbestos)

All samples analysed by polarised light microscopy, including dispersion staining.

Note 1 (Applies only if present in Analysis Result): Confirmation by another analytical technique advised due to the nature of the sample.

33538

SAMPLE ANALYSIS RESULTS

Page 11 of 33

Sample No.	Description/Sample Size	Analysis Result
33538/102	Multipurpose Hall - Female Staff 84 - cement sheet wall - green painted pink cement sheet material - 2 cm ³	Chrysotile (White Asbestos)/ Amosite (Brown Asbestos)
33538/103	Multipurpose Hall - Female Staff 84 - cement sheet ceiling - white painted grey cement sheet material - 1 cm ³	Chrysotile (White Asbestos)
33538/104	Multipurpose Hall - Female 86 - cement sheet wall - green painted pink cement sheet material - 1 cm ³	Chrysotile (White Asbestos)
33538/105	Multipurpose Hall - Female 86 - cement sheet cistern backing - green painted pink cement sheet material - 1 cm ³	Chrysotile (White Asbestos)
33538/106	Multipurpose Hall - Female 86 - cement sheet cubicle wall - green painted pink cement sheet material - 1 cm ³	Chrysotile (White Asbestos)
33538/107	Multipurpose Hall - Female 86 - cement sheet ceiling - white painted pink cement sheet material - 1 cm ³	Chrysotile (White Asbestos)
33538/108	Multipurpose Hall - Lobby 90 - cement sheet wall - green painted pink cement sheet material - 1 cm ³	Chrysotile (White Asbestos)
33538/109	Multipurpose Hall - Lobby 90 - cement sheet ceiling - white painted pink cement sheet material - 1 cm ³	Chrysotile (White Asbestos)/ Amosite (Brown Asbestos)
33538/110	Multipurpose Hall - Cloak 91 - cement sheet wall - green painted grey cement sheet material - 1 cm ³	Chrysotile (White Asbestos)/ Amosite (Brown Asbestos)
33538/111	Multipurpose Hall - Cloak 91 - cement sheet ceiling - cream painted grey cement sheet material - 1 cm ³	Chrysotile (White Asbestos)/ Amosite (Brown Asbestos)
33538/112	Multipurpose Hall - Bulk Store 94 - cement sheet wall - cream painted pink cement sheet material - 2 cm ³	Chrysotile (White Asbestos)/ Amosite (Brown Asbestos)
33538/113	Multipurpose Hall - Bulk Store 94 - cement sheet ceiling - white painted pink cement sheet material - 1 cm ³	Chrysotile (White Asbestos)/ Amosite (Brown Asbestos)

All samples analysed by polarised light microscopy, including dispersion staining.

Note 1 (Applies only if present in Analysis Result): Confirmation by another analytical technique advised due to the nature of the sample.

33538

SAMPLE ANALYSIS RESULTS

Page 12 of 33

Sample No.	Description/Sample Size	Analysis Result
33538/114	Multipurpose Hall - Porch 95 - cement sheet ceiling - white painted pink cement sheet material - 1 cm ³	Chrysotile (White Asbestos)
33538/115	Multipurpose Hall - Porch 95 - cement sheet infill panel below windows - brown painted pink cement sheet material - <1 cm ³	Chrysotile (White Asbestos)/ Amosite (Brown Asbestos)
33538/116	Multipurpose Hall - Servery 93 - cement sheet wall - cream painted pink cement sheet material - 1 cm ³	Chrysotile (White Asbestos)/ Amosite (Brown Asbestos)
33538/117	Multipurpose Hall - Servery 93 - cement sheet ceiling - cream painted pink cement sheet material - 1 cm ³	Chrysotile (White Asbestos)/ Amosite (Brown Asbestos)
33538/118	Multipurpose Hall - Male Staff 83 - cement sheet wall - pink cement sheet material - 1 cm ³	Chrysotile (White Asbestos)/ Amosite (Brown Asbestos)
33538/119	Multipurpose Hall - Male Staff 83 - cement sheet ceiling detector - white painted pink cement sheet material - 1 cm ³	Chrysotile (White Asbestos)/ Amosite (Brown Asbestos)
33538/120	Multipurpose Hall - Male Staff 83 - cement sheet ceiling detector - white painted pink cement sheet material - 1 cm ³	Chrysotile (White Asbestos)/ Amosite (Brown Asbestos)
33538/121	Multipurpose Hall - Male 85 - cement sheet wall - green painted pink cement sheet material - 3 cm ³	Chrysotile (White Asbestos)/ Amosite (Brown Asbestos)
33538/122	Multipurpose Hall - Male 85 - cement sheet cistern backing - green painted pink cement sheet material - 1 cm ³	Chrysotile (White Asbestos)/ Amosite (Brown Asbestos)
33538/123	Multipurpose Hall - Male 85 - cement sheet cubicle wall - green painted pink cement sheet material - <1 cm ³	Chrysotile (White Asbestos)/ Amosite (Brown Asbestos)
33538/124	Multipurpose Hall - Male 85 - cement sheet ceiling - white painted pink cement sheet material - 1 cm ³	Chrysotile (White Asbestos)/ Amosite (Brown Asbestos)
33538/125	Multipurpose Hall - Lobby 88 - cement sheet wall - green painted pink cement sheet material - 2 cm ³	Chrysotile (White Asbestos)/ Amosite (Brown Asbestos)

All samples analysed by polarised light microscopy, including dispersion staining.

Note 1 (Applies only if present in Analysis Result): Confirmation by another analytical technique advised due to the nature of the sample.

33538

SAMPLE ANALYSIS RESULTS

Page 13 of 33

Sample No.	Description/Sample Size	Analysis Result
33538/126	Multipurpose Hall - Lobby 88 - cement sheet repair panel - green painted pink cement sheet material - 2 cm ³	Chrysotile (White Asbestos)/ Amosite (Brown Asbestos)
33538/127	Multipurpose Hall - Lobby 88 - cement sheet ceiling - white painted pink cement sheet material - 2 cm ³	Chrysotile (White Asbestos)/ Amosite (Brown Asbestos)
33538/128	Multipurpose Hall - PE Store 79 - cement sheet wall - green painted pink cement sheet material - 2 cm ³	Chrysotile (White Asbestos)/ Amosite (Brown Asbestos)
33538/129	Multipurpose Hall - PE Store 79 - cement sheet ceiling detector - white painted pink cement sheet material - 1 cm ³	Chrysotile (White Asbestos)/ Amosite (Brown Asbestos)
33538/130	Multipurpose Hall - PE Store 79 - cement sheet ceiling detector - white painted pink cement sheet material - 1 cm ³	Chrysotile (White Asbestos)/ Amosite (Brown Asbestos)
33538/131	Multipurpose Hall - Chair Store 77 - cement sheet ceiling - white painted pink cement sheet material - 1 cm ³	Chrysotile (White Asbestos)/ Amosite (Brown Asbestos)
33538/132	Multipurpose Hall - Hall 81 - cement sheet lined fire hose cupboard, west of Chair Store 77 - pink cement sheet material - 1 cm ³	Chrysotile (White Asbestos)/ Amosite (Brown Asbestos)
33538/133	Multipurpose Hall - Clnr 70 - cement sheet wall - green painted pink cement sheet material - 1 cm ³	Chrysotile (White Asbestos)/ Amosite (Brown Asbestos)
33538/134	Multipurpose Hall - Clnr 70 - cement sheet ceiling - cream painted pink cement sheet material - 1 cm ³	Chrysotile (White Asbestos)
33538/135	Multipurpose Hall - Male Change 65 - cement sheet wall - white painted pink cement sheet material - 3 cm ³	Chrysotile (White Asbestos)/ Amosite (Brown Asbestos)
33538/136	Multipurpose Hall - Male Change 65 - cement sheet partition wall - cream painted brown cement sheet material - 1 cm ³	No Asbestos Fibres Detected

All samples analysed by polarised light microscopy, including dispersion staining.

Note 1 (Applies only if present in Analysis Result): Confirmation by another analytical technique advised due to the nature of the sample.

33538

SAMPLE ANALYSIS RESULTS

Page 14 of 33

Sample No.	Description/Sample Size	Analysis Result
33538/137	Multipurpose Hall - Male Change 65 - cement sheet cubicle wall - cream painted pink cement sheet material - 2 cm ³	Chrysotile (White Asbestos)
33538/138	Multipurpose Hall - Male Change 65 - cement sheet ceiling - white painted pink cement sheet material - 2 cm ³	Chrysotile (White Asbestos)
33538/139	Multipurpose Hall - Male Change 65 - cement sheet cistern backing - cream painted pink cement sheet material - 2 cm ³	Chrysotile (White Asbestos)/ Amosite (Brown Asbestos)
33538/140	Multipurpose Hall - Male Change 65 - cement sheet repair panel, east wall - cream painted brown cement sheet material - 1 cm ³	No Asbestos Fibres Detected
33538/141	Multipurpose Hall - Male Change 65 - cement sheet repair panel, east wall - cream painted grey cement sheet material - 1 cm ³	No Asbestos Fibres Detected
33538/142	Multipurpose Hall - Male Change 65 - cement sheet repair panel, east wall - grey cement sheet material - 2 cm ³	No Asbestos Fibres Detected
33538/143	Multipurpose Hall - Male Change 65 - cement sheet repair panel, south wall - cream painted grey cement sheet material - 2 cm ³	No Asbestos Fibres Detected
33538/144	Multipurpose Hall - Male Change 65 - cement sheet partition wall, south of cubicles - white painted pink cement sheet material - 1 cm ³	Chrysotile (White Asbestos)/ Amosite (Brown Asbestos)
33538/145	Multipurpose Hall - Male Change 65 - cement sheet repair panel, north of Steps 72 - cream painted grey cement sheet material - 1 cm ³	No Asbestos Fibres Detected
33538/146	Multipurpose Hall - Steps 68 - cement sheet wall - cream painted pink cement sheet material - 1 cm ³	Chrysotile (White Asbestos)/ Amosite (Brown Asbestos)

All samples analysed by polarised light microscopy, including dispersion staining.

Note 1 (Applies only if present in Analysis Result): Confirmation by another analytical technique advised due to the nature of the sample.

33538

SAMPLE ANALYSIS RESULTS

Page 15 of 33

Sample No.	Description/Sample Size	Analysis Result
33538/147	Multipurpose Hall - Prop Store 64 - cement sheet wall - cream painted pink cement sheet material - 3 cm ³	Chrysotile (White Asbestos)/ Amosite (Brown Asbestos)
33538/148	Multipurpose Hall - Prop Store 64 - cement sheet repair panel to partition wall (unpainted) - grey cement sheet material - 1 cm ³	No Asbestos Fibres Detected
33538/149	Multipurpose Hall - Prop Store 64 - cement sheet partition wall - cream painted pink cement sheet material - 3 cm ³	Chrysotile (White Asbestos)/ Amosite (Brown Asbestos)
33538/150	Multipurpose Hall - Prop Store 64 - cement sheet debris from partition wall - cream painted pink cement sheet material - >4 cm ³	Chrysotile (White Asbestos)/ Amosite (Brown Asbestos)
33538/151	Multipurpose Hall - Platform 67 - cement sheet partition wall - blue painted pink cement sheet material - 2 cm ³	Chrysotile (White Asbestos)/ Amosite (Brown Asbestos)
33538/152	Multipurpose Hall - Platform 67 - cement sheet infill above Stage - pink cement sheet material - 1 cm ³	Chrysotile (White Asbestos)/ Amosite (Brown Asbestos)/ Crocidolite (Blue Asbestos)
33538/153	Multipurpose Hall - mezzanine level above Steps 69 - cement sheet wall - cream painted pink cement sheet material - 1 cm ³	Chrysotile (White Asbestos)/ Amosite (Brown Asbestos)
33538/154	Multipurpose Hall - mezzanine level above Steps 68 - cement sheet wall - cream painted pink cement sheet material - 4 cm ³	Chrysotile (White Asbestos)/ Amosite (Brown Asbestos)
33538/155	Multipurpose Hall - Steps 69 - cement sheet wall - blue painted pink cement sheet material - 1 cm ³	Chrysotile (White Asbestos)/ Amosite (Brown Asbestos)
33538/156	Multipurpose Hall - Store 243 - cement sheet wall - cream painted pink cement sheet material - 2 cm ³	Chrysotile (White Asbestos)/ Amosite (Brown Asbestos)/ Crocidolite (Blue Asbestos)
33538/157	Multipurpose Hall - Store 243 - millboard lining to switchboard - white fibrous material - 3 cm ³	Chrysotile (White Asbestos)

All samples analysed by polarised light microscopy, including dispersion staining.

Note 1 (Applies only if present in Analysis Result): Confirmation by another analytical technique advised due to the nature of the sample.

33538

SAMPLE ANALYSIS RESULTS

Page 16 of 33

Sample No.	Description/Sample Size	Analysis Result
33538/158	Multipurpose Hall - Hall 81 - cement sheet fire hose cupboard lining, west of Chair Store 76 - pink cement sheet material - 1 cm ³	Chrysotile (White Asbestos)/ Amosite (Brown Asbestos)
33538/159	Multipurpose Hall - Hall 81 - cement sheet repair panel from fire hose cupboard, west of Chair Store 76 - pink cement sheet material - 1 cm ³	Chrysotile (White Asbestos)
33538/160	Multipurpose Hall - Cnr 71 - cement sheet wall - cream painted pink cement sheet material - 2 cm ³	Chrysotile (White Asbestos)/ Amosite (Brown Asbestos)
33538/161	Multipurpose Hall - Cnr 71 - cement sheet ceiling - white painted grey cement sheet material - 1 cm ³	Chrysotile (White Asbestos)
33538/162	Multipurpose Hall - Female Change 66 - cement sheet wall - blue painted grey cement sheet material - 1 cm ³	Chrysotile (White Asbestos)
33538/163	Multipurpose Hall - Female Change 66 - cement sheet cubicle wall - blue painted pink cement sheet material - 1 cm ³	Chrysotile (White Asbestos)
33538/164	Multipurpose Hall - Female Change 66 - cement sheet ceiling - blue painted pink cement sheet material - 1 cm ³	Chrysotile (White Asbestos)
33538/165	Multipurpose Hall - Female Change 66 - cement sheet partition wall - blue painted pink cement sheet material - 2 cm ³	Chrysotile (White Asbestos)/ Amosite (Brown Asbestos)
33538/166	Multipurpose Hall - Female Change 66 - cement sheet cistern backing - blue painted pink cement sheet material - 2 cm ³	Chrysotile (White Asbestos)/ Amosite (Brown Asbestos)
33538/167	Multipurpose Hall - Female Change 66 - cement sheet repair panel, west wall - blue painted brown cement sheet material - 2 cm ³	No Asbestos Fibres Detected

All samples analysed by polarised light microscopy, including dispersion staining.

Note 1 (Applies only if present in Analysis Result): Confirmation by another analytical technique advised due to the nature of the sample.

33538

SAMPLE ANALYSIS RESULTS

Page 17 of 33

Sample No.	Description/Sample Size	Analysis Result
33538/168	Multipurpose Hall - Female Change 66 - cement sheet repair panel, west wall - white painted pink cement sheet material - 1 cm ³	No Asbestos Fibres Detected
33538/169	Multipurpose Hall - Chair Store 76 - cement sheet ceiling - white painted brown cement sheet material - 1 cm ³	Chrysotile (White Asbestos)
33538/170	Multipurpose Hall - PE Store 80 - cement sheet wall - green painted pink cement sheet material - 1 cm ³	Chrysotile (White Asbestos)/ Amosite (Brown Asbestos)
33538/171	Multipurpose Hall - PE Store 80 - cement sheet ceiling detector - white painted pink cement sheet material - 1 cm ³	Chrysotile (White Asbestos)/ Amosite (Brown Asbestos)
33538/172	Multipurpose Hall - PE Store 80 - cement sheet ceiling detector - white painted brown cement sheet material - <1 cm ³	Chrysotile (White Asbestos)
33538/173	Multipurpose Hall - PE Store 80 - gasket to sprinkler system mains board - black mastic material - <1 cm ³	No Asbestos Fibres Detected ^{Note 1}
33538/174	Multipurpose Hall - Covered Way 130 - cement sheet infill panel above hall door - cream painted pink cement sheet material - 1 cm ³	Chrysotile (White Asbestos)/ Amosite (Brown Asbestos)
33538/175	Multipurpose Hall - Porch 74 - cement sheet infill panel above door - cream painted pink cement sheet material - 2 cm ³	Chrysotile (White Asbestos)/ Amosite (Brown Asbestos)
33538/176	Multipurpose Hall - Porch 87 - cement sheet infill panel above door - brown painted pink cement sheet material - <1 cm ³	Chrysotile (White Asbestos)/ Amosite (Brown Asbestos)
33538/177	Multipurpose Hall - Porch 89 - cement sheet infill panel above door - cream painted pink cement sheet material - 2 cm ³	Chrysotile (White Asbestos)/ Amosite (Brown Asbestos)

All samples analysed by polarised light microscopy, including dispersion staining.

Note 1 (Applies only if present in Analysis Result): Confirmation by another analytical technique advised due to the nature of the sample.

33538

SAMPLE ANALYSIS RESULTS

Page 18 of 33

Sample No.	Description/Sample Size	Analysis Result
33538/178	Multipurpose Hall - Porch 82 - cement sheet infill panel above door - cream painted grey cement sheet material - <1 cm ³	Chrysotile (White Asbestos)/ Amosite (Brown Asbestos)
33538/179	Multipurpose Hall - Porch 75 - cement sheet infill panel above door - cream painted pink cement sheet material - <1 cm ³	Chrysotile (White Asbestos)/ Amosite (Brown Asbestos)
33538/180	Multipurpose Hall - Store 244 - cement sheet wall infill panel - pink cement sheet material - 1 cm ³	Chrysotile (White Asbestos)
33538/181	Multipurpose Hall - Store 244 - cement sheet box infill panel on east wall - pink cement sheet material - 3 cm ³	Chrysotile (White Asbestos)/ Amosite (Brown Asbestos)
33538/182	Multipurpose Hall - Store 244 - cement sheet ceiling - white painted pink cement sheet material - 1 cm ³	Chrysotile (White Asbestos)/ Amosite (Brown Asbestos)
33538/183	Multipurpose Hall - Store 244 - cement sheet wall, east - pink cement sheet material - 1 cm ³	Chrysotile (White Asbestos)
33538/184	Multipurpose Hall - Store 244 - stored cement sheet display board - grey cement sheet material - <1 cm ³	Chrysotile (White Asbestos)
33538/185 X	Music Block - Corridor 102 - vinyl tiles floor covering - white rigid vinyl material - 4 cm ³	Chrysotile (White Asbestos)
33538/185 Y	Music Block - Corridor 102 - vinyl tiles floor covering - black mastic material - <1 cm ³	Chrysotile (White Asbestos)
33538/186 X	Music Block - Instruments Store 99 - vinyl tiles floor covering - white rigid vinyl material - >4 cm ³	Chrysotile (White Asbestos)
33538/186 Y	Music Block - Instruments Store 99 - vinyl tiles floor covering - black mastic material - <1 cm ³	Chrysotile (White Asbestos)
33538/187 X	Music Block - Office 103 - vinyl tiles floor covering - white rigid vinyl material - 4 cm ³	Chrysotile (White Asbestos)

All samples analysed by polarised light microscopy, including dispersion staining.

Note 1 (Applies only if present in Analysis Result): Confirmation by another analytical technique advised due to the nature of the sample.

33538

SAMPLE ANALYSIS RESULTS

Page 19 of 33

Sample No.	Description/Sample Size	Analysis Result
33538/187 Y	Music Block - Office 103 - vinyl tiles floor covering - black mastic material - <1 cm ³	Chrysotile (White Asbestos)
33538/188	Trade Wing - Lockers 208 - sheet vinyl floor covering - beige flexible vinyl material - 2 cm ³	No Asbestos Fibres Detected ^{Note 1}
33538/189	Trade Wing - Lockers 208 - sheet vinyl floor covering - blue flexible vinyl material - 1 cm ³	No Asbestos Fibres Detected ^{Note 1}
33538/190	Trade Wing - Lobby 246 - sheet vinyl floor covering - cream flexible vinyl material - 2 cm ³	No Asbestos Fibres Detected ^{Note 1}
33538/191	Trade Wing - Lobby 246 - sheet vinyl floor covering - blue - flexible vinyl material - 1 cm ³	No Asbestos Fibres Detected ^{Note 1}
33538/192	Trade Wing - Laundry 206 - sheet vinyl floor covering - blue flexible vinyl material - 2 cm ³	No Asbestos Fibres Detected ^{Note 1}
33538/193	Trade Wing - Preparation 205 - sheet vinyl floor covering - blue flexible vinyl material - 2 cm ³	No Asbestos Fibres Detected ^{Note 1}
33538/194	Trade Wing - Preparation 205 - cement sheet under sheet vinyl floor covering - grey cement sheet material - 3 cm ³	No Asbestos Fibres Detected
33538/195	Trade Wing - Laundry 206 - cement sheet floor under sheet vinyl floor covering - grey cement sheet material - 3 cm ³	No Asbestos Fibres Detected
33538/196 X	Trade Wing - Home Economics 203 - sheet vinyl floor covering - blue flexible vinyl material - 2 cm ³	No Asbestos Fibres Detected ^{Note 1}
33538/196 Y	Trade Wing - Home Economics 203 - sheet vinyl floor covering - brown fibrous material - 1 cm ³	No Asbestos Fibres Detected
33538/197 X	Trade Wing - Dining Room 204 - sheet vinyl floor covering - blue flexible vinyl material - 2 cm ³	No Asbestos Fibres Detected ^{Note 1}

All samples analysed by polarised light microscopy, including dispersion staining.

Note 1 (Applies only if present in Analysis Result): Confirmation by another analytical technique advised due to the nature of the sample.

33538

SAMPLE ANALYSIS RESULTS

Page 20 of 33

Sample No.	Description/Sample Size	Analysis Result
33538/197 Y	Trade Wing - Dining Room 204 - sheet vinyl floor covering - brown fibrous material - <1 cm ³	No Asbestos Fibres Detected
33538/198 X	Trade Wing - Store 202 - sheet vinyl floor covering - blue flexible vinyl material - 1 cm ³	No Asbestos Fibres Detected ^{Note 1}
33538/198 Y	Trade Wing - Store 202 - sheet vinyl floor covering - brown fibrous material - <1 cm ³	No Asbestos Fibres Detected
33538/199 X	Trade Wing - Graphics Activity 2 - sheet vinyl floor covering - blue flexible vinyl material - 2 cm ³	No Asbestos Fibres Detected ^{Note 1}
33538/199 Y	Trade Wing - Graphics Activity 2 - sheet vinyl floor covering - brown fibrous material - <1 cm ³	No Asbestos Fibres Detected
33538/200	Trade Wing - Clay Room 201 - cement sheet wall - cream painted brown cement sheet material - 2 cm ³	No Asbestos Fibres Detected
33538/201	Trade Wing - Store 4 - sheet vinyl floor covering - blue flexible vinyl material - 1 cm ³	No Asbestos Fibres Detected ^{Note 1}
33538/202	Trade Wing - Store 198 - sheet vinyl floor covering - blue flexible vinyl material - 1 cm ³	No Asbestos Fibres Detected ^{Note 1}
33538/203	Trade Wing - Store 198 - cement sheet floor under sheet vinyl floor covering - brown cement sheet material - 4 cm ³	No Asbestos Fibres Detected
33538/204	Multipurpose Hall - External - expansion joint mastic - beige mastic material - 1 cm ³	Chrysotile (White Asbestos)
33538/205	Music Block - External - expansion joint mastic, east of Vocal Room 100 - beige mastic material - 2 cm ³	No Asbestos Fibres Detected ^{Note 1}
33538/206	Trade Wing - Dark Room 200 - sheet vinyl floor covering - blue flexible vinyl material - 1 cm ³	No Asbestos Fibres Detected ^{Note 1}

All samples analysed by polarised light microscopy, including dispersion staining.

Note 1 (Applies only if present in Analysis Result): Confirmation by another analytical technique advised due to the nature of the sample.

33538

SAMPLE ANALYSIS RESULTS

Page 21 of 33

Sample No.	Description/Sample Size	Analysis Result
33538/207	Trade Wing - LL 199 - sheet vinyl floor covering - blue rigid vinyl material - 1 cm ³	No Asbestos Fibres Detected ^{Note 1}
33538/208	Trade Wing - Art 2D Activity 6 - sheet vinyl floor covering - blue flexible vinyl material - 1 cm ³	No Asbestos Fibres Detected ^{Note 1}
33538/209	Trade Wing - Corridor 8 - compressed cement sheet wall - yellow painted grey cement sheet material - <1 cm ³	No Asbestos Fibres Detected
33538/210	Trade Wing - Corridor 8 - compressed cement sheet corner infill panel - yellow painted grey cement sheet material - 2 cm ³	No Asbestos Fibres Detected
33538/211	Trade Wing - Corridor 8 - cement sheet ceiling - yellow painted grey cement sheet material - 4 cm ³	Chrysotile (White Asbestos)
33538/212	Trade Wing - External - Courtyard - compressed cement sheet wall - yellow painted grey cement sheet material - 1 cm ³	No Asbestos Fibres Detected
33538/213	Trade Wing - External Ramp - cement sheet wall - yellow painted grey cement sheet material - 1 cm ³	No Asbestos Fibres Detected
33538/214	Trade Wing - Materials 197 - cement sheet dado wall - cream painted grey cement sheet material - 1 cm ³	No Asbestos Fibres Detected
33538/215	Trade Wing - Store 9 - cement sheet dado wall - cream painted grey cement sheet material - 2 cm ³	No Asbestos Fibres Detected
33538/216	Trade Wing - Preparation 10 - cement sheet dado wall - cream painted grey cement sheet material - 2 cm ³	No Asbestos Fibres Detected
33538/217	Trade Wing - Mechanisms 12 - cement sheet dado wall - cream painted grey cement sheet material - 1 cm ³	No Asbestos Fibres Detected
33538/218	Trade Wing - Store 196 - cement sheet dado wall - cream painted grey cement sheet material - 1 cm ³	No Asbestos Fibres Detected

All samples analysed by polarised light microscopy, including dispersion staining.

Note 1 (Applies only if present in Analysis Result): Confirmation by another analytical technique advised due to the nature of the sample.

33538

SAMPLE ANALYSIS RESULTS

Page 22 of 33

Sample No.	Description/Sample Size	Analysis Result
33538/219	Trade Wing - Office 195 - sheet vinyl floor covering - grey flexible vinyl material - 1 cm ³	No Asbestos Fibres Detected ^{Note 1}
33538/220	Trade Wing - Office 195 - cement sheet dado wall - cream painted grey cement sheet material - 2 cm ³	No Asbestos Fibres Detected
33538/221	Trade Wing - Store 13 - sheet vinyl floor covering - grey flexible vinyl material - 1 cm ³	No Asbestos Fibres Detected ^{Note 1}
33538/222	Trade Wing - Store 13 - cement sheet dado wall - cream painted grey cement sheet material - 1 cm ³	No Asbestos Fibres Detected
33538/223	Trade Wing - Technology Studies 16 - cement sheet dado wall - cream painted grey cement sheet material - 4 cm ³	No Asbestos Fibres Detected
33538/224	Trade Wing - Porch 245 - compressed cement sheet wall - cream painted grey cement sheet material - 1 cm ³	No Asbestos Fibres Detected
33538/225	Trade Wing - Porch 245 - compressed cement sheet corner infill panel - cream painted brown cement sheet material - 1 cm ³	No Asbestos Fibres Detected
33538/226	Trade Wing - Porch 245 - cement sheet ceiling - cream painted brown cement sheet material - 1 cm ³	No Asbestos Fibres Detected
33538/227	Shed - Shed 239 - stored cement sheet panel - cream painted brown cement sheet material - 3 cm ³	No Asbestos Fibres Detected
33538/228	Shed - Shed 239 - stored cement sheet panels/debris - grey cement sheet material - 4 cm ³	No Asbestos Fibres Detected
33538/229	Shed - Shed 239 - cement sheet wall - grey cement sheet material - >4 cm ³	No Asbestos Fibres Detected
33538/230	Trade Wing - External - compressed cement sheet wall, west of Print Room 1 - cream painted grey cement sheet material - 1 cm ³	No Asbestos Fibres Detected

All samples analysed by polarised light microscopy, including dispersion staining.

Note 1 (Applies only if present in Analysis Result): Confirmation by another analytical technique advised due to the nature of the sample.

33538

SAMPLE ANALYSIS RESULTS

Page 23 of 33

Sample No.	Description/Sample Size	Analysis Result
33538/231	Trade Wing - External - cement sheet clear storey eaves, west of Print Room 1 - cream painted grey cement sheet material - 1 cm ³	No Asbestos Fibres Detected
33538/232	Trade Wing - External - compressed cement sheet clear storey wall, above Home Economics 203 - grey cement sheet material - 2 cm ³	No Asbestos Fibres Detected
33538/233	Trade Wing - External - compressed cement sheet clear storey corner infill panel, above Home Economics 203 - grey cement sheet material - 2 cm ³	No Asbestos Fibres Detected
33538/234	Trade Wing - External - compressed cement sheet clear storey wall, above Graphics Activity 2 - cream painted grey cement sheet material - 1 cm ³	No Asbestos Fibres Detected
33538/235	Trade Wing - External - compressed cement sheet clear storey corner infill panel, above Graphics Activity 2 - grey cement sheet material - 1 cm ³	No Asbestos Fibres Detected
33538/236	Trade Wing - External - compressed cement sheet wall, west of SWS 207 - cream painted grey cement sheet material - 1 cm ³	No Asbestos Fibres Detected
33538/237	Trade Wing - External - compressed cement sheet clear storey wall, south of Lockers 208 - cream painted grey cement sheet material - 1 cm ³	No Asbestos Fibres Detected
33538/238	Trade Wing - External - cement sheet clear storey eaves, south of Lockers 208 - cream painted grey cement sheet material - 2 cm ³	No Asbestos Fibres Detected
33538/239	Trade Wing - External - cement sheet clear storey eaves, south of Lobby 246 - cream painted grey cement sheet material - 2 cm ³	No Asbestos Fibres Detected

All samples analysed by polarised light microscopy, including dispersion staining.

Note 1 (Applies only if present in Analysis Result): Confirmation by another analytical technique advised due to the nature of the sample.

33538

SAMPLE ANALYSIS RESULTS

Page 24 of 33

Sample No.	Description/Sample Size	Analysis Result
33538/240	Trade Wing - External - compressed cement sheet clear storey wall, above Art 3D Activity Area 5 - cream painted grey cement sheet material - 4 cm ³	No Asbestos Fibres Detected
33538/241	Trade Wing - External - compressed cement sheet clear storey corner infill panel, above Art 3D Activity Area 5 - cream painted grey cement sheet material - 2 cm ³	No Asbestos Fibres Detected
33538/242	Trade Wing - External - cement sheet eaves, east of Courtyard - cream painted grey cement sheet material - 1 cm ³	No Asbestos Fibres Detected
33538/243	Trade Wing - External - cement sheet eaves, west of Ext Ramp - cream painted grey cement sheet material - 1 cm ³	Chrysotile (White Asbestos)
33538/244	Shed - tractor Shed 211 - stored cement sheet panels - pink cement sheet material - 2 cm³	Chrysotile (White Asbestos)
33538/245	Trade Wing - External - cement sheet clear storey eaves, north of Materials 197 - white painted pink cement sheet material - 2 cm ³	Chrysotile (White Asbestos)
33538/246	Trades Wing - External - cement sheet clear storey eaves, north of Mechanisms 12 - white painted grey cement sheet material - 2 cm ³	Chrysotile (White Asbestos)/ Amosite (Brown Asbestos)
33538/247	Science Wing - External - cement sheet eaves, east of Science 37 - white painted pink cement sheet material - 1 cm ³	No Asbestos Fibres Detected
33538/248	Science Wing - External - cement sheet eaves, east of Office 38 - white painted grey cement sheet material - 1 cm ³	Chrysotile (White Asbestos)/ Amosite (Brown Asbestos)
33538/249	Science Wing - External - compressed cement sheet wall, east of Science 37 - grey cement sheet material - 1 cm ³	No Asbestos Fibres Detected

All samples analysed by polarised light microscopy, including dispersion staining.

Note 1 (Applies only if present in Analysis Result): Confirmation by another analytical technique advised due to the nature of the sample.

33538

SAMPLE ANALYSIS RESULTS

Page 25 of 33

Sample No.	Description/Sample Size	Analysis Result
33538/250	Science Wing - External - compressed cement sheet wall, east of Office 38 - grey painted grey cement sheet material - 1 cm ³	No Asbestos Fibres Detected
33538/251	Science Wing - External - cement sheet clear storey eaves, south of Science 37 - cream painted brown cement sheet material - 2 cm ³	Chrysotile (White Asbestos)/ Amosite (Brown Asbestos)
33538/252	Science Wing - External - cement sheet clear storey eaves, north of Classroom 36 - cream painted grey cement sheet material - 1 cm ³	Chrysotile (White Asbestos)/ Amosite (Brown Asbestos)
33538/253	Science Wing - External - cement sheet clear storey eaves, south of Science 27 - cream painted grey cement sheet material - 3 cm ³	Chrysotile (White Asbestos)/ Amosite (Brown Asbestos)
33538/254	Science Wing - External - cement sheet clear storey eaves, north of Store 24 - cream painted grey cement sheet material - 2 cm ³	Chrysotile (White Asbestos)/ Amosite (Brown Asbestos)
33538/255	Science Wing - External - cement sheet clear storey eaves, west of Store 24 - cream painted grey cement sheet material - 1 cm ³	Chrysotile (White Asbestos)/ Amosite (Brown Asbestos)
33538/256	Science Wing - External - cement sheet clear storey eaves, south of Library 23 - cream painted grey cement sheet material - 2 cm ³	No Asbestos Fibres Detected
33538/257	Science Wing - External - cement sheet clear storey eaves, north of Plant 21 - cream painted grey cement sheet material - 2 cm ³	No Asbestos Fibres Detected
33538/258	Science Wing - External - cement sheet clear storey eaves, south of Computers 238 - cream painted grey cement sheet material - <1 cm ³	No Asbestos Fibres Detected
33538/259	Science Wing - External - cement sheet clear storey eaves, north of Textiles 222 - cream painted grey cement sheet material - 1 cm ³	No Asbestos Fibres Detected

All samples analysed by polarised light microscopy, including dispersion staining.

Note 1 (Applies only if present in Analysis Result): Confirmation by another analytical technique advised due to the nature of the sample.

33538

SAMPLE ANALYSIS RESULTS

Page 26 of 33

Sample No.	Description/Sample Size	Analysis Result
33538/260	Science Wing - External - compressed cement sheet clear storey wall, south of Library 23 - cream painted grey cement sheet material - >4 cm ³	No Asbestos Fibres Detected
33538/261	Science Wing - External - compressed cement sheet clear storey wall, north of Plant 21 - cream painted grey cement sheet material - 3 cm ³	No Asbestos Fibres Detected
33538/262	Science Wing - External - cement sheet clear storey infill panel to air conditioning unit, south of Library 23 - white painted grey cement sheet material - 1 cm ³	No Asbestos Fibres Detected
33538/263	Science Wing - External - cement sheet clear storey infill panel for air conditioning unit, south of Library 23 - white painted grey cement sheet material - 1 cm ³	No Asbestos Fibres Detected
33538/264	Science Wing - External - compressed cement sheet clear storey wall, south of Computers 238 - cream painted grey cement sheet material - >4 cm ³	No Asbestos Fibres Detected
33538/265	Science Wing - External - compressed cement sheet clear storey wall, north of Textiles 222 - cream painted grey cement sheet material - 3 cm ³	No Asbestos Fibres Detected
33538/266	Science Wing - external - compressed cement sheet clear storey corner infill panel, south west of Computers 238 - brown painted grey cement sheet material - 1 cm ³	No Asbestos Fibres Detected
33538/267	Science Wing - compressed cement sheet clear storey corner infill panel, north west of Textiles 222 - cream painted grey cement sheet material - 1 cm ³	No Asbestos Fibres Detected

All samples analysed by polarised light microscopy, including dispersion staining.

Note 1 (Applies only if present in Analysis Result): Confirmation by another analytical technique advised due to the nature of the sample.

33538

SAMPLE ANALYSIS RESULTS

Page 27 of 33

Sample No.	Description/Sample Size	Analysis Result
33538/268	Science Wing - External - cement sheet infill panel for air conditioning unit, south of Computers 238 - white painted grey cement sheet material - 1 cm ³	No Asbestos Fibres Detected
33538/269	Science Wing - External - cement sheet infill panel for air conditioning unit, south of Computers 235 - white painted brown cement sheet material - >4 cm ³	No Asbestos Fibres Detected
33538/270	Commerce Wing - External - cement sheet clear storey eaves, north of Conference 63 - brown cement sheet material - 2 cm ³	Chrysotile (White Asbestos)/ Amosite (Brown Asbestos)
33538/271	Commerce Wing - External - cement sheet clear storey eaves, east of Classroom 53 - cream painted brown cement sheet material - 1 cm ³	Chrysotile (White Asbestos)/ Amosite (Brown Asbestos)
33538/272	Commerce Wing - External - cement sheet clear storey eaves, east of DIS WC 241 - cream painted grey cement sheet material - 3 cm ³	Chrysotile (White Asbestos)/ Amosite (Brown Asbestos)
33538/273	Commerce Wing - External - cement sheet clear storey eaves, south of Classroom 49 - cream painted grey cement sheet material - 1 cm ³	Chrysotile (White Asbestos)/ Amosite (Brown Asbestos)
33538/274	Commerce Wing - External - cement sheet clear storey eaves, north of Classroom 50 - cream painted grey cement sheet material - 1 cm ³	Chrysotile (White Asbestos)/ Amosite (Brown Asbestos)
33538/275	Commerce Wing - External - cement sheet eaves, west of Classroom 45 - cream painted grey cement sheet material - 2 cm ³	Chrysotile (White Asbestos)/ Amosite (Brown Asbestos)
33538/276	Commerce Wing - External - cement sheet eaves, west of Office 242 - cream painted grey cement sheet material - 1 cm ³	Chrysotile (White Asbestos)/ Amosite (Brown Asbestos)

All samples analysed by polarised light microscopy, including dispersion staining.

Note 1 (Applies only if present in Analysis Result): Confirmation by another analytical technique advised due to the nature of the sample.

33538

SAMPLE ANALYSIS RESULTS

Page 28 of 33

Sample No.	Description/Sample Size	Analysis Result
33538/277	Commerce Wing - External - cement sheet debris on roof, north of Office 242 - cream painted grey cement sheet material - >4 cm ³	Chrysotile (White Asbestos)/ Amosite (Brown Asbestos)
33538/278	Commerce Wing - External - cement sheet infill panel around wall fan, north of FS WC 55 - blue painted grey cement sheet material - 4 cm ³	Chrysotile (White Asbestos)
33538/279	Trade Wing - External - cement sheet eaves, east of Technology Studies 16 - white painted grey cement sheet material - 1 cm ³	Chrysotile (White Asbestos)/ Amosite (Brown Asbestos)
33538/280	Trade Wing - External - cement sheet eaves, south of Technology Studies 16 - white painted grey cement sheet material - 1 cm ³	Chrysotile (White Asbestos)/ Amosite (Brown Asbestos)
33538/281	Trade Wing - External - cement sheet eaves, south of Garage II - white painted brown cement sheet material - 1 cm ³	No Asbestos Fibres Detected
33538/282	Trade Wing - External - cement sheet eaves, west of Garage II - white painted brown cement sheet material - 1 cm ³	No Asbestos Fibres Detected
33538/283	Trade Wing - External - cement sheet clear storey eaves, north of Garage II - white painted brown cement sheet material - <1 cm ³	No Asbestos Fibres Detected
33538/284	Trade Wing - External - cement sheet eaves, east of Store 13 - white painted brown cement sheet material - 1 cm ³	No Asbestos Fibres Detected
33538/285	Trade Wing - External - cement sheet eaves, south of Materials 197 - white painted grey cement sheet material - 1 cm ³	Chrysotile (White Asbestos)/ Amosite (Brown Asbestos)
33538/286	Trade Wing - External - cement sheet eaves, south of Art 2D Activity 6 - white painted grey cement sheet material - 1 cm ³	No Asbestos Fibres Detected

All samples analysed by polarised light microscopy, including dispersion staining.

Note 1 (Applies only if present in Analysis Result): Confirmation by another analytical technique advised due to the nature of the sample.

33538

SAMPLE ANALYSIS RESULTS

Page 29 of 33

Sample No.	Description/Sample Size	Analysis Result
33538/287	Trade Wing - External - compressed cement sheet wall, south of Art 2D Activity 6 - cream painted grey cement sheet material - 1 cm ³	No Asbestos Fibres Detected
33538/288	Trade Wing - External - cement sheet eaves, south of Art 3D Activity Area 5 - cream painted grey cement sheet material - 1 cm ³	No Asbestos Fibres Detected
33538/289	Trade Wing - External - compressed cement sheet corner infill panel, south east of Store 198 - cream painted grey cement sheet material - >4 cm ³	No Asbestos Fibres Detected
33538/290	Trade Wing - External - cement sheet eaves, south of Print Room 1 - cream painted grey cement sheet material - 1 cm ³	No Asbestos Fibres Detected
33538/291	Trade Wing - External - cement sheet eaves, south of Dining Room 204 - cream painted grey cement sheet material - 1 cm ³	No Asbestos Fibres Detected
33538/292	Trade Wing - External - cement sheet eaves, north of Laundry 206 - cream painted grey cement sheet material - 1 cm ³	No Asbestos Fibres Detected
33538/293	Trade Wing - External - compressed cement sheet wall, north of Laundry 206 - cream painted grey cement sheet material - <1 cm ³	No Asbestos Fibres Detected
33538/294	Trade Wing - External - cement sheet corner infill panel, north west of Home Economics 203 - cream painted grey cement sheet material - 1 cm ³	No Asbestos Fibres Detected
33538/295	Trade Wing - External - cement sheet eaves, north of Home Economics 203 - cream painted grey cement sheet material - 1 cm ³	No Asbestos Fibres Detected
33538/296	Trade Wing - External - cement sheet eaves, north of SWS 207 - cream painted grey cement sheet material - 1 cm ³	No Asbestos Fibres Detected

All samples analysed by polarised light microscopy, including dispersion staining.

Note 1 (Applies only if present in Analysis Result): Confirmation by another analytical technique advised due to the nature of the sample.

33538

SAMPLE ANALYSIS RESULTS

Page 30 of 33

Sample No.	Description/Sample Size	Analysis Result
33538/297	Trade Wing - External - cement sheet eaves, north of Lockers 208 - cream painted grey cement sheet material - 2 cm ³	No Asbestos Fibres Detected
33538/298	Trade Wing - External - compressed cement sheet wall, north of Lockers 208 - cream painted grey cement sheet material - 2 cm ³	No Asbestos Fibres Detected
33538/299	Science Wing - External - cement sheet eaves, south of Cleaner 25 - white painted grey cement sheet material - <1 cm ³	Chrysotile (White Asbestos)/ Amosite (Brown Asbestos)
33538/300	Science Wing - External - cement sheet eaves, south of Office 38 - white painted grey cement sheet material - 2 cm ³	Chrysotile (White Asbestos)/ Amosite (Brown Asbestos)
33538/301	Science Wing - External - cement sheet porch ceiling, east of Corridor 28 - white painted grey cement sheet material - <1 cm ³	No Asbestos Fibres Detected
33538/302	Science Wing - External - cement sheet eaves, north of Store 35 - white painted grey cement sheet material - <1 cm ³	No Asbestos Fibres Detected
33538/303	Science Wing - External - cement sheet eaves, north of Science 27 - white painted grey cement sheet material - 1 cm ³	Chrysotile (White Asbestos))
33538/304	Science Wing - External - cement sheet porch ceiling, east of Covered Link 131 - white painted grey cement sheet material - 1 cm ³	Chrysotile (White Asbestos)
33538/305	Science Wing - External - cement sheet eaves, east of Covered Link 131 - white painted grey cement sheet material - >4 cm ³	Chrysotile (White Asbestos)/ Amosite (Brown Asbestos)
33538/306	Science Way - External - cement sheet porch ceiling, west of Covered Link 131 - cream painted grey cement sheet material - 1 cm ³	Chrysotile (White Asbestos)/ Amosite (Brown Asbestos)

All samples analysed by polarised light microscopy, including dispersion staining.

Note 1 (Applies only if present in Analysis Result): Confirmation by another analytical technique advised due to the nature of the sample.

33538

SAMPLE ANALYSIS RESULTS

Page 31 of 33

Sample No.	Description/Sample Size	Analysis Result
33538/307	Science Wing - External - cement sheet eaves, west of Covered Link 131 - cream painted grey cement sheet material - 1 cm ³	Chrysotile (White Asbestos)/Amosite (Brown Asbestos)
33538/308	Science Wing - External - cement sheet porch ceiling, east of Lobby 256 - cream painted grey cement sheet material - 1 cm ³	No Asbestos Fibres Detected
33538/309	Science Wing - External - compressed cement sheet wall, north of Library 23 - cream painted grey cement sheet material - >4 cm ³	No Asbestos Fibres Detected
33538/310	Science Wing - External - compressed cement sheet corner infill panel, north of Library 23 - cream painted grey cement sheet material - 1 cm ³	No Asbestos Fibres Detected
33538/311	Science Wing - External - cement sheet eaves, north of Lobby 256 - cream painted grey cement sheet material - <1 cm ³	No Asbestos Fibres Detected
33538/312	Science Wing - External - cement sheet eaves, north of Classroom 232 - cream painted grey cement sheet material - <1 cm ³	No Asbestos Fibres Detected
33538/313	Science Wing - External - cement sheet eaves, north of Computers 235, north of Computers 235 - cream painted grey cement sheet material - <1 cm ³	No Asbestos Fibres Detected
33538/314	Science Wing - External - compressed cement sheet wall, north of Computers 235 - cream painted grey cement sheet material - <1 cm ³	No Asbestos Fibres Detected
33538/315	Science Wing - External - cement sheet eaves, north of Support 236 - cream painted grey cement sheet material - 1 cm ³	No Asbestos Fibres Detected

All samples analysed by polarised light microscopy, including dispersion staining.

Note 1 (Applies only if present in Analysis Result): Confirmation by another analytical technique advised due to the nature of the sample.

33538

SAMPLE ANALYSIS RESULTS

Page 32 of 33

Sample No.	Description/Sample Size	Analysis Result
33538/316	Science Wing - External - cement sheet eaves, north of Computers 238 - cream painted grey cement sheet material - 2 cm ³	No Asbestos Fibres Detected
33538/317	Science Wing - External - west of Store 223 - compressed cement sheet wall - cream painted grey cement sheet material - 1 cm ³	No Asbestos Fibres Detected
33538/318	Science Wing - External - compressed cement sheet corner infill panel, south west of Store 223 - cream painted grey cement sheet material - 2 cm ³	No Asbestos Fibres Detected
33538/319	Science Wing - External - cement sheet eaves, south of SWS 220 - cream painted grey cement sheet material - 1 cm ³	No Asbestos Fibres Detected
33538/320	Science Wing - External - cement sheet eaves, south of Girls 217 - cream painted grey cement sheet material - <1 cm ³	No Asbestos Fibres Detected
33538/321	Science Wing - External - compressed cement sheet wall, south of Girls 217 - cream painted grey cement sheet material - 1 cm ³	No Asbestos Fibres Detected
33538/322	Commerce Wing - External - cement sheet eaves, north of Corridor 40 - cream painted grey cement sheet material - <1 cm ³	Chrysotile (White Asbestos)/ Amosite (Brown Asbestos)
33538/323	Commerce Wing - External - cement sheet eaves, north of Classroom 45 - cream painted grey cement sheet material - 1 cm ³	No Asbestos Fibres Detected
33538/324	Commerce Wing - External - cement sheet eaves, north of Classroom 53 - cream painted grey cement sheet material - 2 cm ³	Chrysotile (White Asbestos)/ Amosite (Brown Asbestos)
33538/325	Commerce Wing - External - cement sheet eaves, north of Classroom 62 - white painted grey cement sheet material - 1 cm ³	Chrysotile (White Asbestos)/ Amosite (Brown Asbestos)

All samples analysed by polarised light microscopy, including dispersion staining.

Note 1 (Applies only if present in Analysis Result): Confirmation by another analytical technique advised due to the nature of the sample.

33538

SAMPLE ANALYSIS RESULTS

Page 33 of 33

Sample No.	Description/Sample Size	Analysis Result
33538/326	Commerce Wing - External - cement sheet eaves, east of Staffroom 62 - white painted grey cement sheet material - 1 cm ³	Chrysotile (White Asbestos)/ Amosite (Brown Asbestos)
33538/327	Commerce Wing - External - cement sheet eaves, east of Principal 60 - white painted brown cement sheet material - 2 cm ³	No Asbestos Fibres Detected
33538/328	Commerce Wing - External - cement sheet infill panel to Porch 226, west - white painted grey cement sheet material - 1 cm ³	No Asbestos Fibres Detected
33538/329	Commerce Wing - External - cement sheet infill panel to air conditioning unit, east of General Office 61 - white painted brown cement sheet material - 1 cm ³	No Asbestos Fibres Detected
33538/330	Commerce Wing - External - compressed cement sheet wall, east of Staffroom 62 - grey cement sheet material - 3 cm ³	No Asbestos Fibres Detected
33538/331	Commerce Wing - External - subfloor cement sheet debris under Staffroom 62 - grey cement sheet material - 3 cm ³	No Asbestos Fibres Detected
33538/332	Commerce Wing - External - compressed cement sheet wall, east of Resource 57 - brown painted grey cement sheet material - 4 cm ³	No Asbestos Fibres Detected
33538/333	Commerce Wing - External - cement sheet eaves, south of Resource 57 - white painted grey cement sheet material - <1 cm ³	Chrysotile (White Asbestos)/ Amosite (Brown Asbestos)
33538/334	Commerce Wing - External - cement sheet eaves, south of Meeting 51 - cream painted grey cement sheet material - 1 cm ³	Chrysotile (White Asbestos)/ Amosite (Brown Asbestos)
33538/335	Commerce Wing - External - cement sheet eaves, south of Office 242 - cream painted grey cement sheet material - 1 cm ³	Chrysotile (White Asbestos)/ Amosite (Brown Asbestos)

All samples analysed by polarised light microscopy, including dispersion staining.

Note 1 (Applies only if present in Analysis Result): Confirmation by another analytical technique advised due to the nature of the sample.

Appendix C

Asbestos Materials Maintenance Log

The following log should be maintained by the responsible person. It should contain information relating to the ongoing maintenance or control measures associated with Asbestos Materials including; removal, remedial works, repairs, inspection, monitoring and clearance details etc.

[illegible]

Appendix D

Legislative Requirements

LEGISLATIVE REQUIREMENTS — ASBESTOS

This document has been produced for information only and is under regular review due to frequent changes in legislation and guidance. It contains information relating to the column headings only and not, for instance, in relation to asbestos removal. It is the duty of employers, premise owners and controllers of premises etc. to ensure they are familiar with the latest applicable state legislation and guidance.

Accredited for compliance with
ISO/IEC 17020. NATA accredited
inspection body 2220



STATE Primary Asbestos Legislation	Asbestos Assessment Requirements	Asbestos Reassessment Requirements	Reporting Requirements	Management and Labelling/Signage Requirements	Other Requirements
VICTORIA Occupational Health & Safety Act 2004 Occupational Health and Safety Regulations 2017 Supported by: Compliance Code: Managing Asbestos in Workplaces 2019 Compliance Code: Removing Asbestos in Workplaces 2019 Note: Victoria has deferred implementing harmonisation.	Occupier's responsibility to determine whether asbestos is present and if so to identify the type, location, friability and condition of ACM. 'a person who manages or controls a workplace must, so far as is reasonably practicable, identify all asbestos containing materials (ACM) at the workplace and have them recorded in an asbestos register.' Occupational Health and Safety Regulations 2017 [Chapter 4, Part 4.4, Division 5, Subdivision 2] Also to conduct risk assessment on the basis of the above plus likely disturbances. Results of Atmospheric monitoring are to be available for potentially affected employees.	Undertake review and revision of risk assessment when condition of asbestos changes, remedial work has been carried out or the assessment is no longer valid. Maximum review timeframe is 5 years.	The site specific Asbestos Register needs to include the date, type, location, condition and work likely to disturb ACM identified during the assessment. The Asbestos Register must be maintained and also updated if: further ACM is identified and/or, ACM is removed, disturbed or encapsulated. At least once every 5 years. A copy of the Asbestos Register is made available to: persons working at the workplace; and licensed asbestos removalist; and persons performing other tasks as prescribed at s. 4.4.305. Notification to Authority 24hrs prior for removal work for ACM < 10 m ² and non-friable and then by a competent person and 5 days prior for other cases. Notification to Authority with 24hrs of unexpected situations.	Training and record of same is required for persons involved in asbestos removal work. If practicable, presence of ACM in a workplace has to be labelled. Before refurbishment or demolition: ensure Asbestos Register is obtained, reviewed and is current undertake necessary inspections. A licenced asbestos removalist is required unless: ACM < 10 m ² and non-friable and then by a competent person and removal work is < 1 hr in any 7 day period.	The person who commissioned the asbestos removal work must obtain a clearance certificate from an independent person before the area where the asbestos removal work was being performed is re-occupied.

Appendix E

Site Plan

Notes:



Scale @ A4:

Not To Scale

Levels:

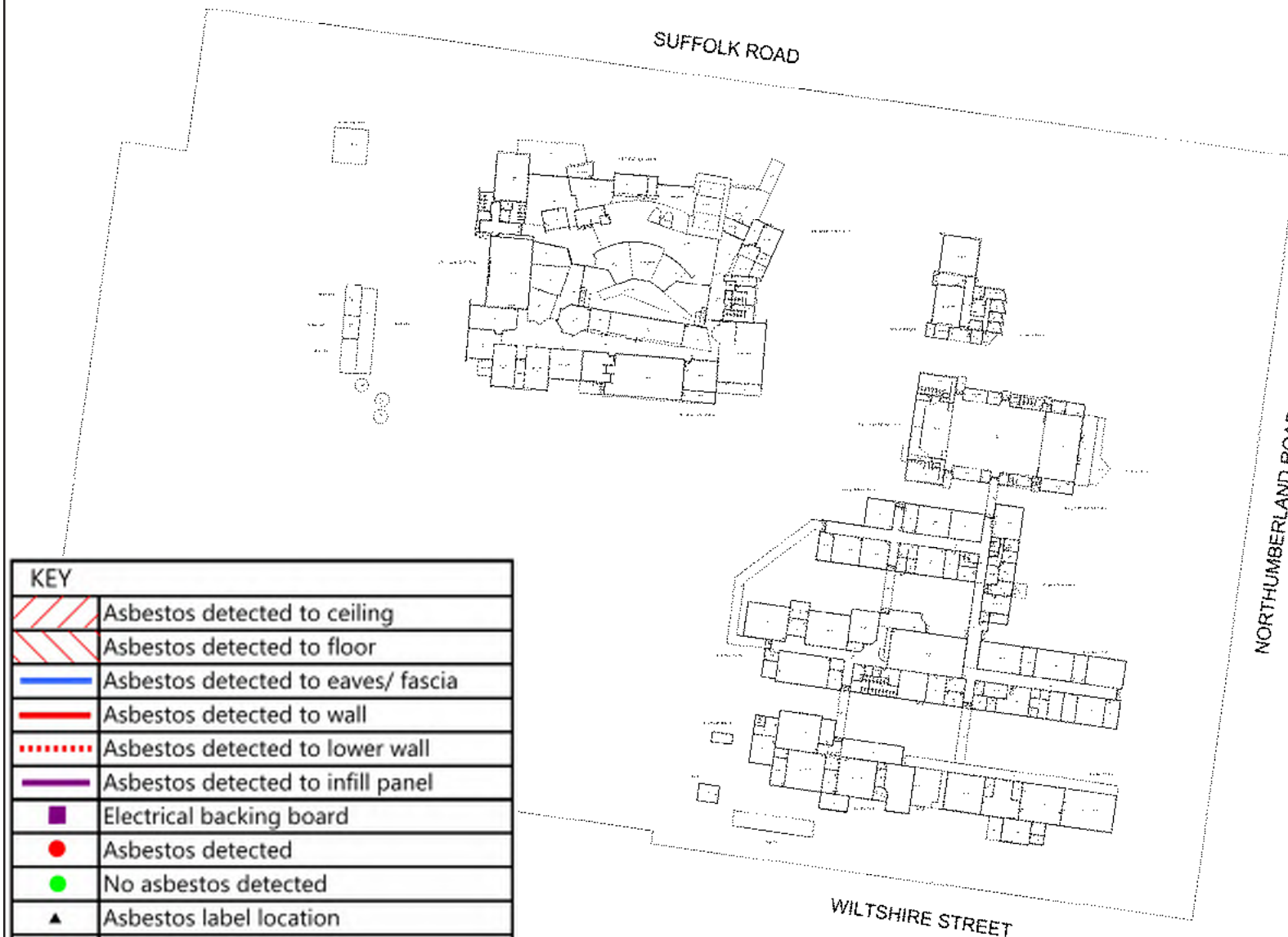
Ground Floor

Feature Selection

	Outlines	Text	Tags	Numbers
Buildings	✓	✓		
Construction Zones				na
Rooms	✓	✓		na
Doors	✓	na	na	na
Site	✓	✓		na

[Construction Zones]

[Reset Drawings]



KEY	
	Asbestos detected to ceiling
	Asbestos detected to floor
	Asbestos detected to eaves/ fascia
	Asbestos detected to wall
	Asbestos detected to lower wall
	Asbestos detected to infill panel
	Electrical backing board
	Asbestos detected
	No asbestos detected
	Asbestos label location
	Induction label location



Department of Education and Early Childhood Development

These drawings were prepared by Indec-Arup for the Department of Education and Early Childhood Development. Any queries relating to these drawings should be referred to Asset Management.
E-mail: sams@edumail.vic.gov.au

Revision Date: 21-07-2014

School Asset Management System

SUNSHINE COLLEGE

SUNSHINE NORTH
NORTHUMBERLAND ROAD
SUNSHINE NORTH
3020

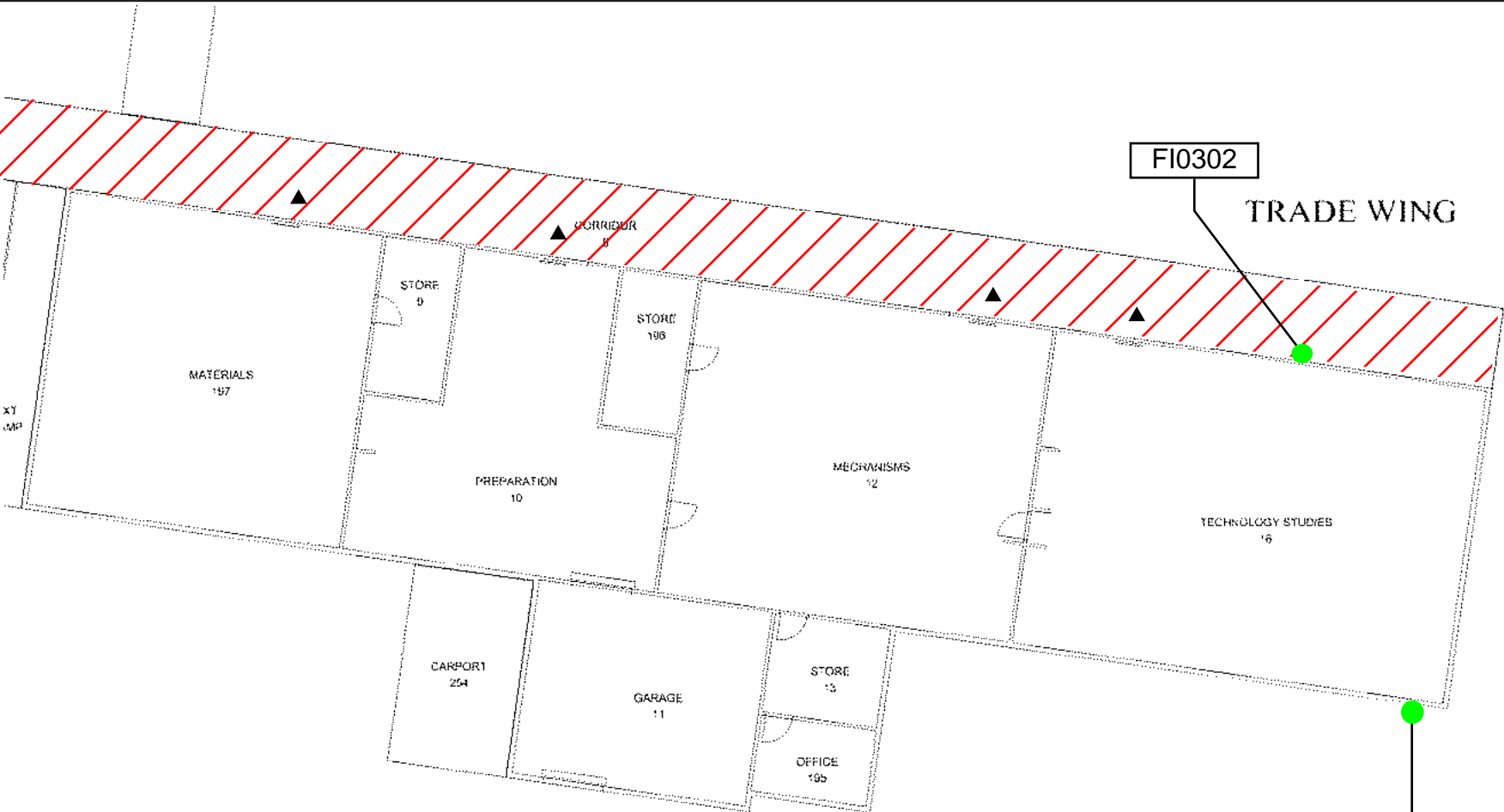
School no: 8790

Campus no: 4


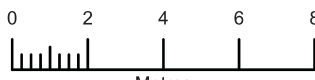
Region no: 74

SOUTH-WESTERN VICTORIA

THESE DRAWINGS ARE FOR INFORMATION PURPOSES ONLY.



Notes:

Scale @ A4:
1:200

Levels:
Ground Floor

Feature Selection

	Outlines	Text	Tags	Numbers
Buildings	✓	✓		
Construction Zones				na
Rooms	✓	✓		na
Doors	✓	na	na	na
Site	✓	✓		na

[Construction Zones]
[Reset Drawings]



Department of Education and
Early Childhood Development

THESE DRAWINGS ARE FOR INFORMATION PURPOSES ONLY.

These drawings were prepared by Indec-Arup for the Department of Education and Early Childhood Development. Any queries relating to these drawings should be referred to Asset Management.
E-mail: sams@edumail.vic.gov.au

Revision Date: 21-07-2014

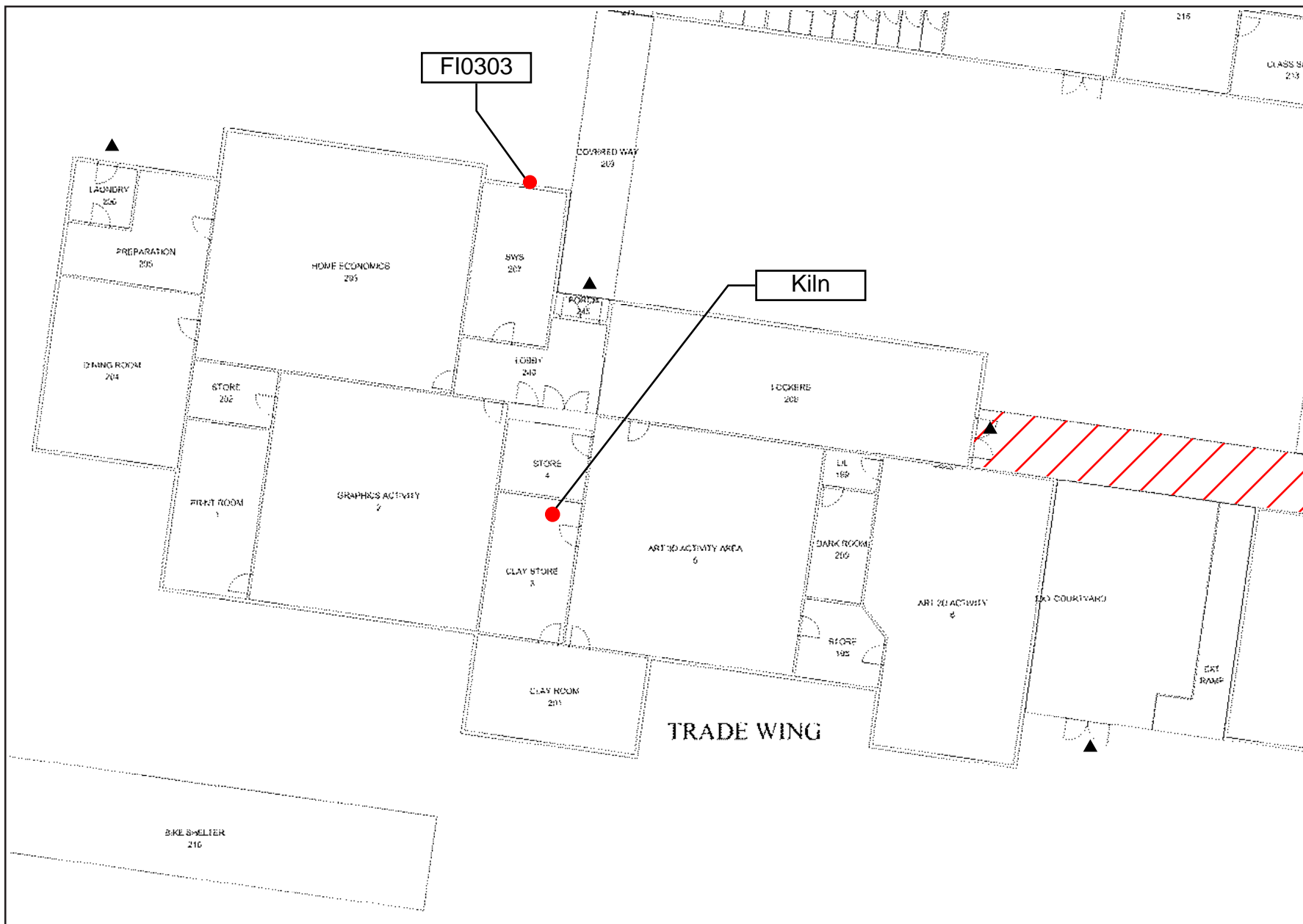
School Asset Management System

SUNSHINE COLLEGE

SUNSHINE NORTH
NORTHUMBERLAND ROAD
SUNSHINE NORTH
3020

School no: 8790
Campus no: 4

Region no: 74
SOUTH-WESTERN VICTORIA



Notes:



Scale @ A4:

Not To Scale

Levels:

Ground Floor

Feature Selection

	Outlines	Text	Tags	Numbers
Buildings	✓	✓		
Construction Zones				na
Rooms	✓	✓		na
Doors	✓	na	na	na
Site	✓	✓		na

[Construction Zones]

[Reset Drawings]



Department of Education and
Early Childhood Development

These drawings were prepared by Indec-Arup for the Department of Education and Early Childhood Development. Any queries relating to these drawings should be referred to Asset Management.
E-mail: sams@edumail.vic.gov.au

Revision Date: 21-07-2014

School Asset Management System

SUNSHINE COLLEGE

SUNSHINE NORTH
NORTHUMBERLAND ROAD
SUNSHINE NORTH
3020

School no: 8790

Campus no: 4

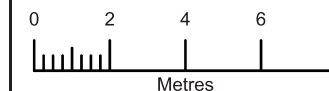
Region no: 74

SOUTH-WESTERN VICTORIA

THESE DRAWINGS ARE FOR INFORMATION PURPOSES ONLY.



Notes:



Scale @ A4:

1:200

Levels:

Ground Floor

Feature Selection

	Outlines	Text	Tags	Numbers
Buildings	✓	✓		
Construction Zones				na
Rooms	✓	✓		na
Doors	✓	na	na	na
Site	✓	✓		na

[Construction Zones]

[Reset Drawings]



Department of Education and
Early Childhood Development

These drawings were prepared by Indec-Arup for
the Department of Education and Early Childhood
Development. Any queries relating to these drawings
should be referred to Asset Management.
E-mail: sams@edumail.vic.gov.au

Revision Date: 21-07-2014

School Asset Management System

SUNSHINE COLLEGE

SUNSHINE NORTH
NORTHUMBERLAND ROAD
SUNSHINE NORTH
3020

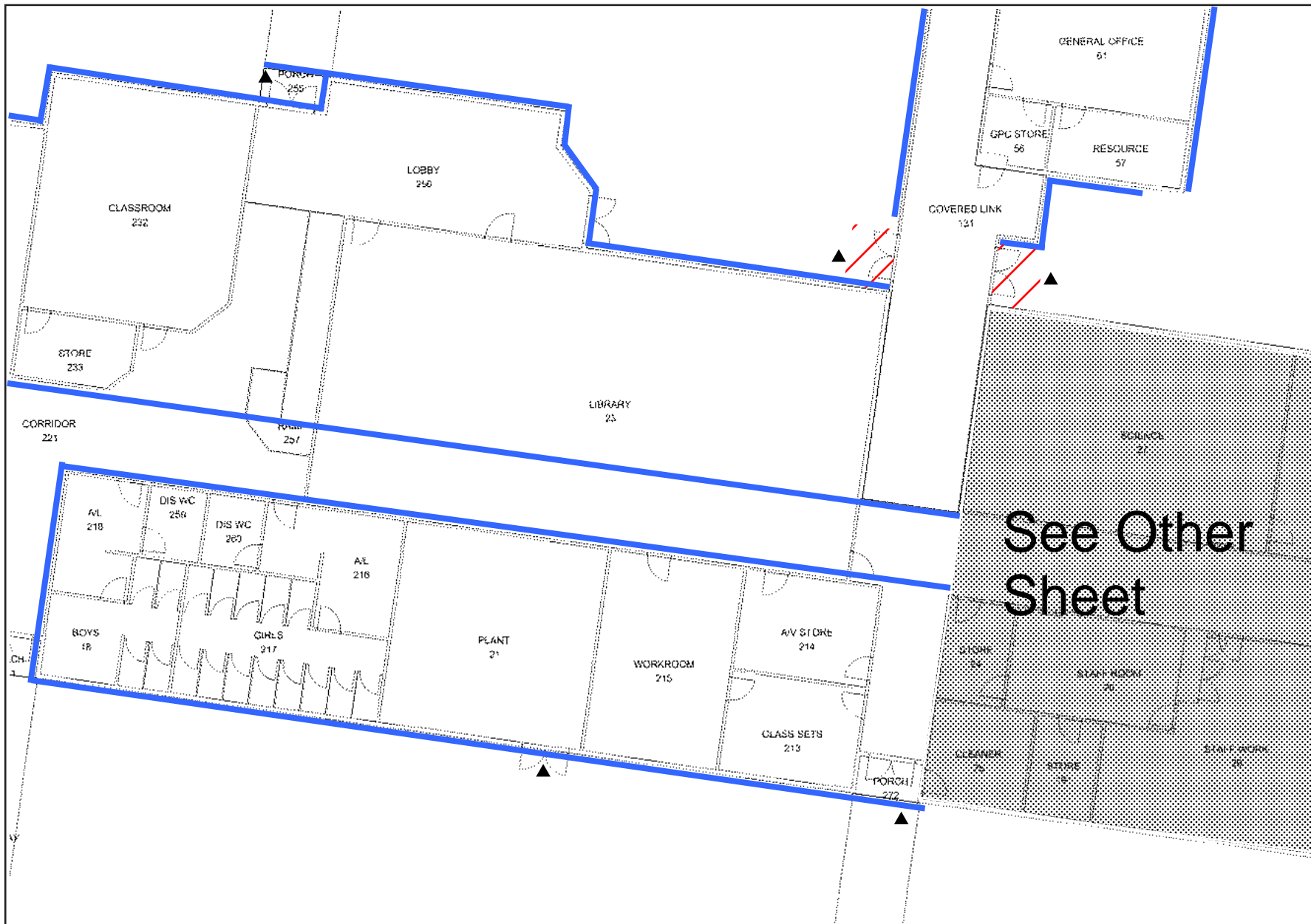
School no: 8790

Campus no: 4

Region no: 74

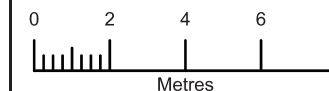
SOUTH-WESTERN VICTORIA

THESE DRAWINGS ARE FOR INFORMATION PURPOSES ONLY.



Notes:

SCIENCE WING



Scale @ A4:

1:200

Levels:

Ground Floor

Feature Selection

	Outlines	Text	Tags	Numbers
Buildings	✓	✓		
Construction Zones				na
Rooms	✓	✓		na
Doors	✓	na	na	na
Site	✓	✓		na

[Construction Zones]

[Reset Drawings]



Department of Education and
Early Childhood Development

These drawings were prepared by Indec-Arup for the Department of Education and Early Childhood Development. Any queries relating to these drawings should be referred to Asset Management.
E-mail: sams@edumail.vic.gov.au

Revision Date: 21-07-2014

School Asset Management System

SUNSHINE COLLEGE

SUNSHINE NORTH
NORTHUMBERLAND ROAD
SUNSHINE NORTH
3020

School no: 8790

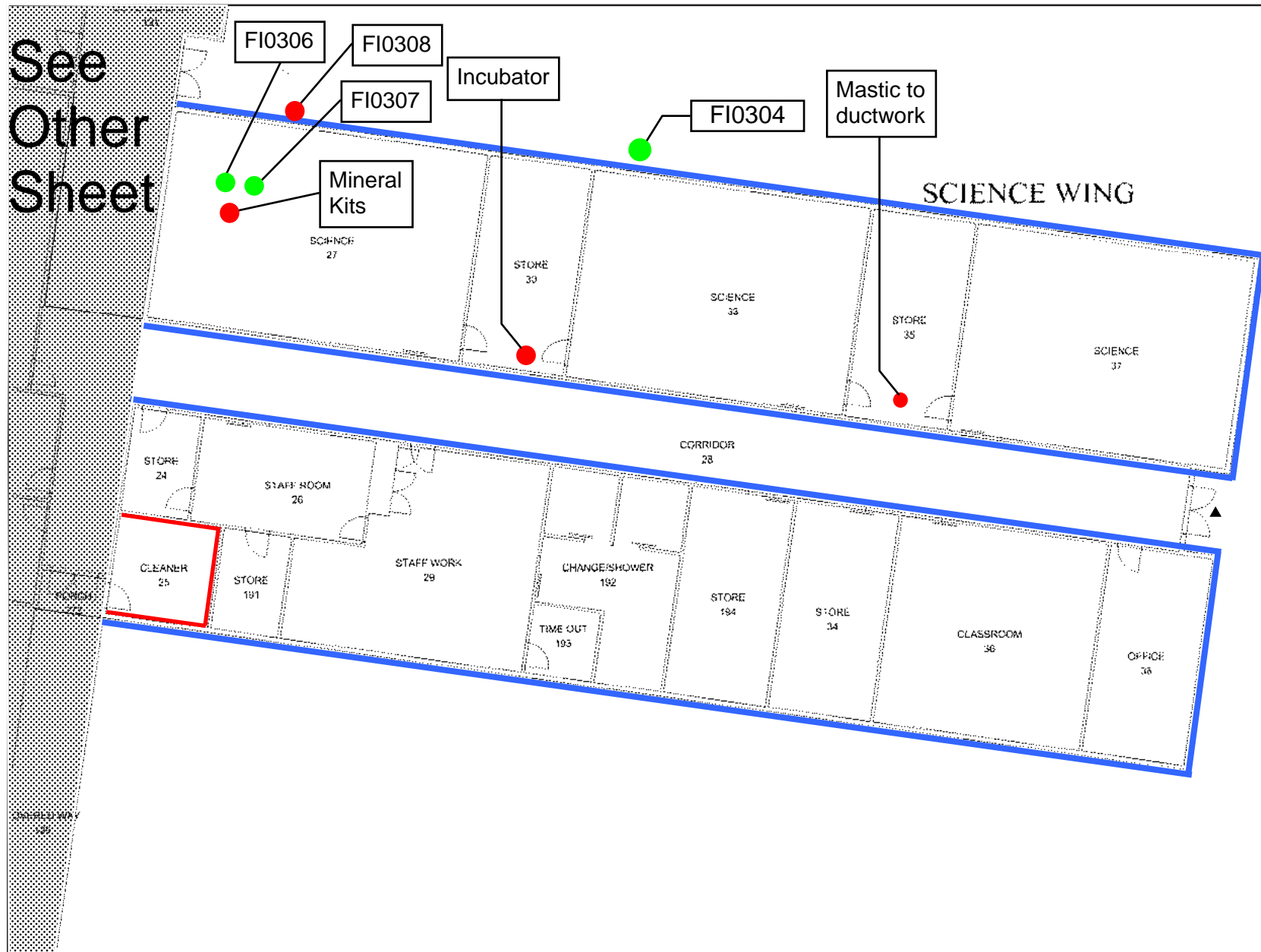
Campus no: 4

Region no: 74

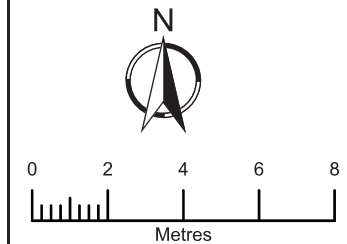
SOUTH-WESTERN VICTORIA

THESE DRAWINGS ARE FOR INFORMATION PURPOSES ONLY.

See
Other
Sheet



Notes:



Scale @ A4:

1:200

Levels:

Ground Floor

Feature Selection

	Outlines	Text	Tags	Numbers
Buildings	✓	✓		
Construction Zones				na
Rooms	✓	✓		na
Doors	✓	na	na	na
Site	✓	✓		na

[Construction Zones]

[Reset Drawings]



Department of Education and
Early Childhood Development

These drawings were prepared by Indec-Arup for the Department of Education and Early Childhood Development. Any queries relating to these drawings should be referred to Asset Management.
E-mail: sams@edumail.vic.gov.au

Revision Date: 21-07-2014

School Asset Management System

SUNSHINE COLLEGE

SUNSHINE NORTH
NORTHUMBERLAND ROAD
SUNSHINE NORTH
3020

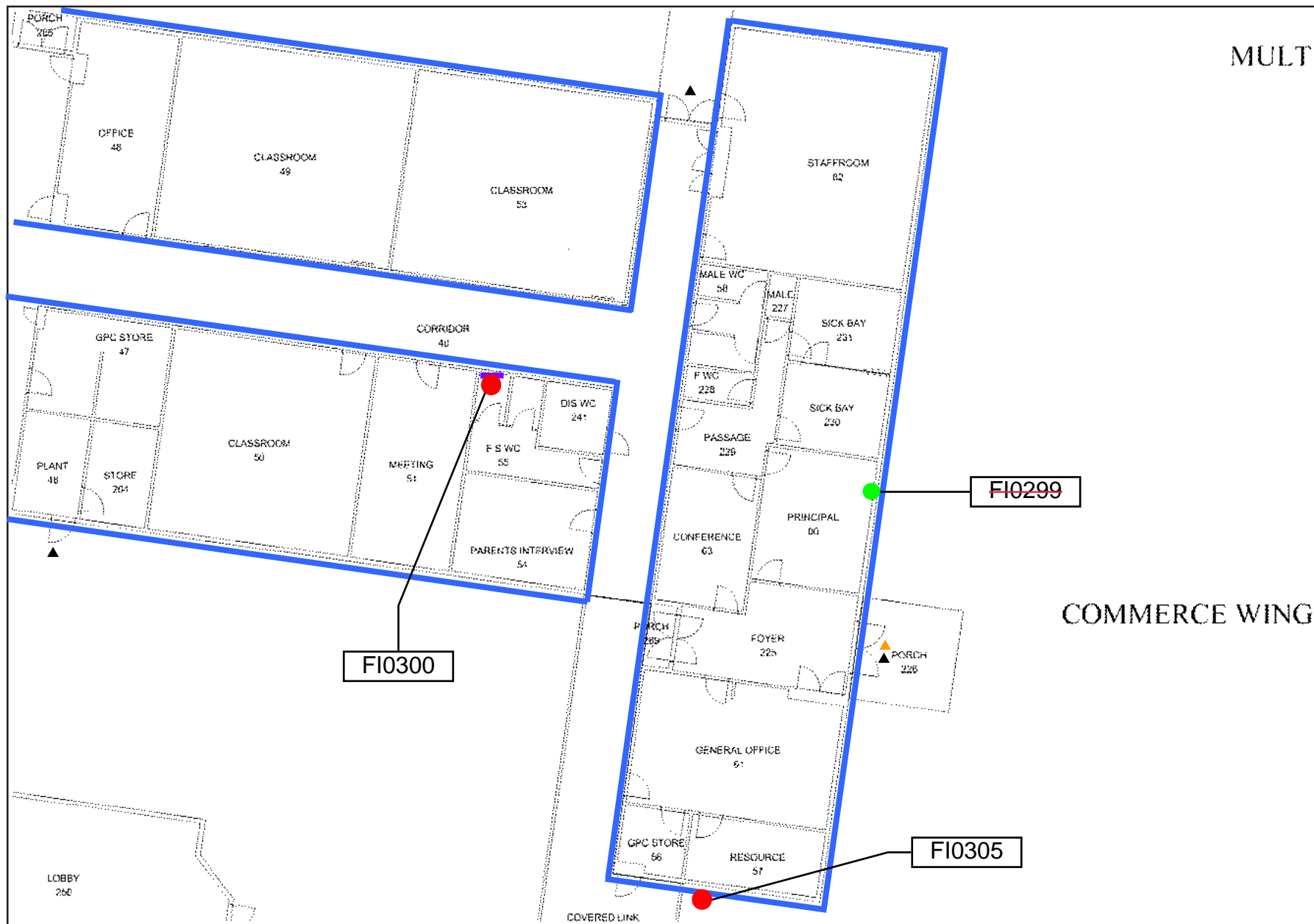
School no: 8790

Campus no: 4

Region no: 74

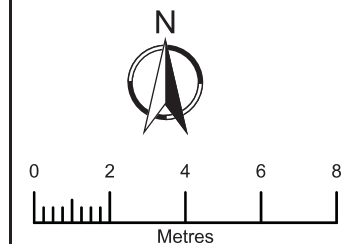
SOUTH-WESTERN VICTORIA

THESE DRAWINGS ARE FOR INFORMATION PURPOSES ONLY.



MULT

Notes:



Scale @ A4:

1:200

Levels:

Ground Floor

Feature Selection

	Outlines	Text	Tags	Numbers
Buildings	✓	✓		
Construction Zones				na
Rooms	✓	✓		na
Doors	✓	na	na	na
Site	✓	✓		na

[Construction Zones]

[Reset Drawings]

COMMERCE WING



Department of Education and
Early Childhood Development

These drawings were prepared by Indec-Arup for
the Department of Education and Early Childhood
Development. Any queries relating to these drawings
should be referred to Asset Management.
E-mail: sams@edumail.vic.gov.au

Revision Date: 21-07-2014

School Asset Management System

SUNSHINE COLLEGE

SUNSHINE NORTH
NORTHUMBERLAND ROAD
SUNSHINE NORTH
3020

School no: 8790

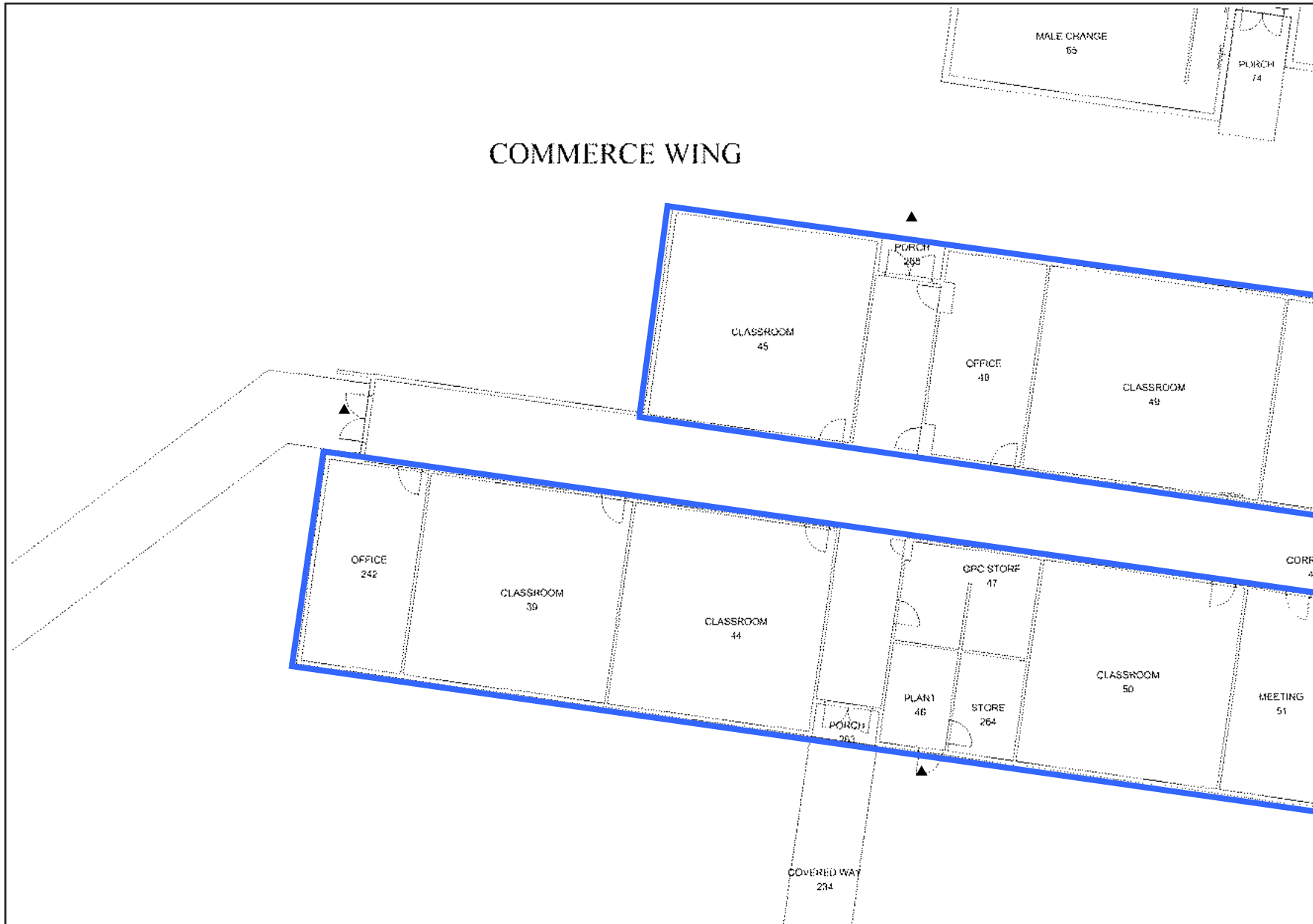
Campus no: 4

Region no: 74

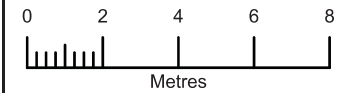
SOUTH-WESTERN VICTORIA

THESE DRAWINGS ARE FOR INFORMATION PURPOSES ONLY.

COMMERCE WING



Notes:



Scale @ A4:

1:200

Levels:

Ground Floor

Feature Selection

	Outlines	Text	Tags	Numbers
Buildings	✓	✓		
Construction Zones				na
Rooms	✓	✓		na
Doors	✓	na	na	na
Site	✓	✓		na

[Construction Zones]

[Reset Drawings]



Department of Education and
Early Childhood Development

These drawings were prepared by Indec-Arup for the Department of Education and Early Childhood Development. Any queries relating to these drawings should be referred to Asset Management.
E-mail: sams@edumail.vic.gov.au

Revision Date: 21-07-2014

School Asset Management System

SUNSHINE COLLEGE

SUNSHINE NORTH
NORTHUMBERLAND ROAD
SUNSHINE NORTH
3020

School no: 8790

Campus no: 4

Region no: 74

SOUTH-WESTERN VICTORIA

THESE DRAWINGS ARE FOR INFORMATION PURPOSES ONLY.

Room has now been removed.

Electrical backing boards

FI0298

FI0297

Notes:



Scale @ A4:

Not To Scale

Levels:

Ground Floor

Feature Selection

	Outlines	Text	Tags	Numbers
Buildings	✓	✓		
Construction Zones				na
Rooms	✓	✓		na
Doors	✓	na	na	na
Site	✓	✓		na

[Construction Zones]

[Reset Drawings]



Department of Education and Early Childhood Development

These drawings were prepared by Indec-Arup for the Department of Education and Early Childhood Development. Any queries relating to these drawings should be referred to Asset Management.
E-mail: sams@edumail.vic.gov.au

School Asset Management System

Interactive Siteplan

SUNSHINE COLLEGE

SUNSHINE NORTH
NORTHUMBERLAND ROAD
SUNSHINE NORTH
3020

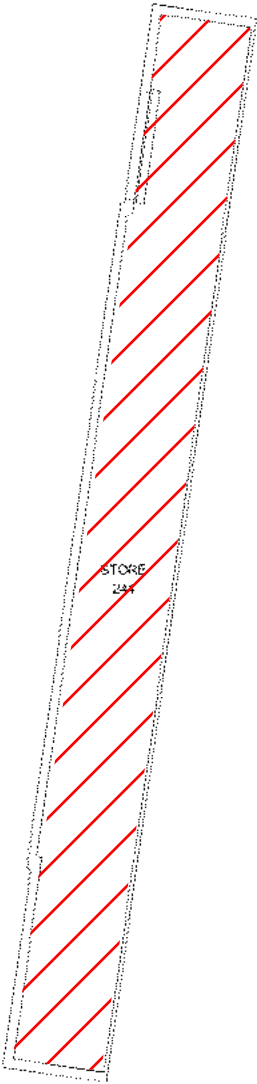
School no: 8790
Campus no: 4

Region no: 74
SOUTH-WESTERN VICTORIA

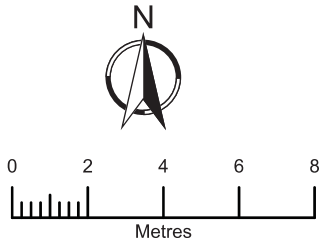
THESE DRAWINGS ARE FOR INFORMATION PURPOSES ONLY.

Revision Date: 21-07-2014

MULTI-PURPOSE HALL



Notes:



Scale @ A4:

1:200

Levels:

Basement 1

Feature Selection

	Outlines	Text	Tags	Numbers
Buildings	✓	✓		
Construction Zones				na
Rooms	✓	✓		na
Doors	✓	na	na	na
Site	✓	✓		na

[Construction Zones]

[Reset Drawings]



Department of Education and Early Childhood Development

These drawings were prepared by Indec-Arup for the Department of Education and Early Childhood Development. Any queries relating to these drawings should be referred to Asset Management.
E-mail: sams@edumail.vic.gov.au

THESE DRAWINGS ARE FOR INFORMATION PURPOSES ONLY.

Revision Date: 21-07-2014

School Asset Management System

Interactive Siteplan

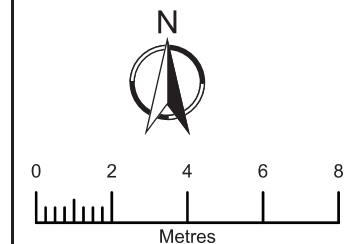
SUNSHINE COLLEGE

SUNSHINE NORTH
NORTHUMBERLAND ROAD
SUNSHINE NORTH
3020

School no: 8790
Campus no: 4

Region no: 74
SOUTH-WESTERN VICTORIA

Notes:



Scale @ A4:

1:200

Levels:

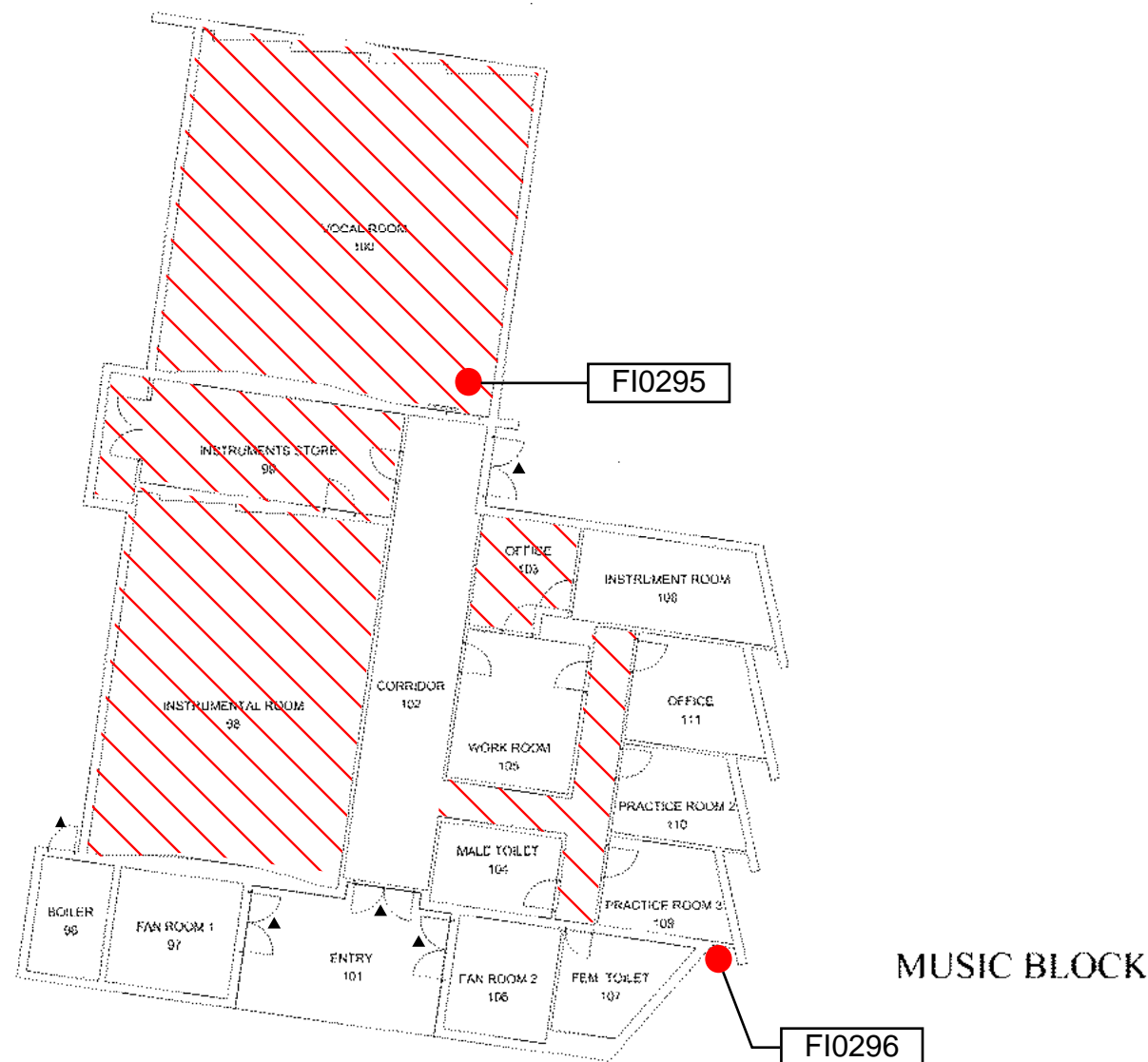
Ground Floor

Feature Selection

	Outlines	Text	Tags	Numbers
Buildings	✓	✓		
Construction Zones				na
Rooms	✓	✓		na
Doors	✓	na	na	na
Site	✓	✓		na

[Construction Zones]

[Reset Drawings]



Department of Education and
Early Childhood Development

These drawings were prepared by Indec-Arup for the Department of Education and Early Childhood Development. Any queries relating to these drawings should be referred to Asset Management.
E-mail: sams@edumail.vic.gov.au

Revision Date: 21-07-2014

School Asset Management System

SUNSHINE COLLEGE

SUNSHINE NORTH
NORTHUMBERLAND ROAD
SUNSHINE NORTH
3020

School no: 8790

Campus no: 4

Region no: 74

SOUTH-WESTERN VICTORIA

THESE DRAWINGS ARE FOR INFORMATION PURPOSES ONLY.

Appendix F

Incident Report

Asbestos Incident Report

Date:	20 November 2019	Date of notification:	20 November 2019	JSQ Ref:	1743
School Name:	Sunshine College – North Sunshine Campus – C4		School Ref:	8970 - 4	
Region:	South-western Victoria		Key Contact:	Mr Andrew Pitrakkou - Principal	
Coffey Consultant:	James Bracken				
Issues: Science Wing: <ul style="list-style-type: none"> Internal Insulation to hot plate (approx. 1 unit), 27 Science; Gauze Mats (approx. 82 units), 27 Science; and Mineral Kits (approx. 11 units), 27 Science. 					
<div style="display: flex; align-items: flex-start;"> <div style="width: 20px; height: 20px; background-color: red; margin-right: 10px;"></div> <div> <p>Access should be restricted to the following items:</p> <ul style="list-style-type: none"> Mineral Kits (approx. 11 units), 27 Science, Science Wing. </div> </div> <div style="display: flex; align-items: flex-start; margin-top: 10px;"> <div style="width: 20px; height: 20px; background-color: green; margin-right: 10px;"></div> <div> <p>Access can return as normal to the following items;</p> <ul style="list-style-type: none"> Internal Insulation to hot plate (approx. 1 unit), 27 Science, Science Wing; and Gauze Mats (approx. 80 units), 27 Science, Science Wing. </div> </div>					
Recommendations: The following science equipment should be removed from 27 Science, Science Wing: <ul style="list-style-type: none"> Mineral Kits (approx. 11 Units). <p>These works should be undertaken by an appropriately licensed asbestos removalist (LAR) under appropriate controlled conditions.</p>					
Action Taken: <p>A Coffey hygienist was on-site conducting a scheduled Division 5 asbestos assessment on 13th November 2019. Whilst on site, the abovementioned issues were observed (see Attachment A: Photographs).</p> <p>Air monitoring was conducted in accordance with Coffey's in-house methods and the <i>Guidance Note on the Membrane Filter Method for Estimating Airborne Asbestos Fibres 2nd Edition</i> [NOHSC: 3003 (2005)] and AS ISO/IEC 17025 – 2005, <i>Australian Standard, General requirements for the competence of testing and calibration laboratories</i>.</p> <p>The following asbestos instance was documented as a visual observation (VO) only:</p> <ul style="list-style-type: none"> VO – Mineral Kits (approx. 11 Units), 27 Science, Science Wing. <p>The following samples were collected of the suspected asbestos-containing materials, as below:</p> <ul style="list-style-type: none"> FI0306 - Internal Insulation to hot plate, 27 Science, Science Wing; and FI0307 - Gauze Mats, 27 Science, Science Wing. <p>"Danger Do Not Enter" labels were applied to all specified items.</p> <p>The Principal was advised of the abovementioned issues and it was recommended that access be restricted to the above items.</p>					

Results:

The air monitoring results were all below the detection limit (0.01 fibres/mL) (**see Attachment B: Airborne Asbestos Monitoring Report**).

The following samples did not contain asbestos:

- FI0306 - Internal Insulation to hot plate, 27 Science, Science Wing; and
- FI0307 - Gauze Mats, 27 Science, Science Wing.

Sample results are attached (**see Attachment C: Coffey Bulk Identification Report**).

Attachment A: Photographs

Attachment B: Airborne Asbestos Monitoring Report

Attachment C: Coffey Bulk Identification

Attachment A: Photographs

Photograph 1. Mineral Kits, 27 Science, Science Wing, (Visual Observation). **Asbestos suspected.**



Photograph 2. Internal Insulation to hot plate, 27 Science, Science Wing; (FI0306). **No asbestos detected.**



Photograph 3. Gauze Mats, 27 Science, Science Wing; (FI0307). **No asbestos detected.**



Analytical Report



Accredited for compliance with
ISO/IEC 17025 - Testing
Accreditation No:2220

Job No: 754-MELEN233430 JSQ 1741
Client: Savills Australia
Client Address: Level 48, 80 Collins Street, Melbourne VIC 3000

Contact: Richard Curtin
E-mail: rcurtin@savills.com.au
Date Sampled: 14/11/2019
Date Printed: 15/11/2019
Sampled By: James Bracken
Site: 8970 - Sunshine College Campus 4, Northumberland Road, Sunshine North, VIC 3020

Test Method: **Airborne Fibre Monitoring**
Dust particulates collected and filters examined in accordance with The Guidance Note on the Membrane Filter Method for Estimating Airborne Asbestos Fibres NOHSC:3003 (2005) and in-house method WILAB 2. Fibres counted may include various substances i.e. not necessarily asbestos.

Jesse McLeod
Approved Counter

Jesse McLeod
Approved Signatory

Slide No.	Location Description	Fibres	Fields	Fibres/mL
H40	27 Science, Science Wing	0.0	100	<0.01
H51	Field Blank	0.0	100	NA

This document may not be reproduced except in full.

Bulk Identification Report

Job No: 754-MELEN233430 Sunshine College 18112019
Client: Victorian School Building Authority
Client Address: 33 St Andrews Place,
 East Melbourne, 3002

Contact: N/A
E-mail: asbestos.reform@edumail.vic.gov.au
Date Sampled: 14/11/2019
Date Printed: 18/11/2019
Sampled By: James Bracken
Site: 18 Withers St, Sunshine VIC 3020



Accredited for compliance with ISO/IEC 17025 - Testing
 Accreditation No:2220
 Corporate Site No:16909

Please note: In accepting the results, you (the client) agree that Coffey Services Australia Pty Ltd does not accept any responsibility for the sample submitted in relation to its source and is not liable for any works undertaken at site based on the analytical data provided. Only the samples submitted for analysis have been considered in presenting these results. Should any other material suspected to contain asbestos be found at the site, then works should cease and a suitably trained asbestos hygienist should be engaged to sample or assess the material.

Asbestos in Bulk Samples and Non-homogenous Material

Test Method: Coffey analyses bulk samples for asbestos using polarising light microscopy and dispersion staining techniques in accordance with Coffey SOP WILAB1, and Australian Standard (AS) 4964 – 2004, Method for the qualitative identification of asbestos in bulk samples (AS 4964). The detection limit for the test method as per AS 4964 is 0.1 g/kg. For non-homogenous samples a semi quantitative aspect is adopted for the test method and is taken into account when reporting the results. As per Coffey's NATA approved SOP WILAB1 sample retention periods are set at 1 month (no asbestos detected) and 3 months (asbestos detected).

Total Samples: 2

Matthew Tang
 Approved Identifier

Patricy Cortes
 Approved Signatory

Sample No.	Location & Description	Sample Size	Results
F10306	Insulation Insulation, 27 Science , Science Wing - Red/brown/white fibrous insulation material	~ 30 x 10 x 3 mm	No asbestos fibres detected Organic fibres detected Synthetic mineral fibres detected
F10307	Gauze mats , 27 Science , Science Wing - Grey speckled coating-like material	~ 11 x 10 x 3 mm	No asbestos fibres detected

This Document may not be reproduced except in full.